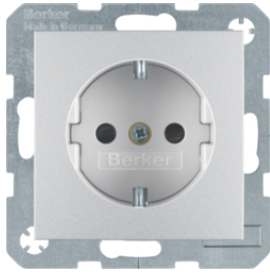


Berker S.1 / B.3 / B.7

Variety was never easier to obtain. You can combine all the rockers, central inserts and frames of the switch programmes S.1, B.3 and B.7 however you desire.

| | Page |
|--|-------------|
| Socket outlet (SCHUKO) | 3 |
| Socket outlet (international) | 7 |
| Rocker | 8 |
| Light controls | 11 |
| LED signal light | 12 |
| Centre plate | 13 |
| Multimedia outlets | 19 |
| Entertainment electronic | 20 |
| Intermediate ring | 21 |
| Centre plates for Hospital installations | 22 |
| Berker S.1 frame | 23 |
| Berker B.3 frame | 25 |
| Berker B.7 frame | 27 |
| Surface installation | 29 |



41231404

SCHUKO

| Description | Pack qty. | Art No. |
|--|-----------|----------|
| S.1/B.1/B.3 SCHUKO-STECKDOSE ALU MIT Z.. | 10 | 41231404 |
| SCHUKO soc.out. S.1/B.x, ant. matt | 10 | 41231606 |
| SOCKET S.1/B.3/B.7 | 10 | 41231909 |
| SOCKET S.1/B.3/B.7 | 10 | 41238982 |
| SOCKET S.1/B.3/B.7 | 10 | 41238989 |
| SCHUKO soc.out. S.1/B.x, alu. matt | 10 | 41431404 |
| SOCKET OUTL.B.1/B.3 ANTHR | 10 | 41431606 |
| SOCKET OUTLET S.1/B.3/B.7 PW | 10 | 41431909 |
| SOCKET OUTLET S.1/B.3/B.7 PW | 10 | 41438982 |
| SOCKET OUTLET S.1/B.3/B.7 PW | 10 | 41438989 |
| SCHUKO s/outlet - B.1/B.7 Glas aluminium | 10 | 47231404 |
| SCHUKO s/outlet B Glas ant, matt | 10 | 47231606 |
| SCHUKO s/outlet -S.1/B PW | 10 | 47231909 |
| SOCKET OUTLET S.1/B.3/B.7 PW | 10 | 47238982 |
| SOCKET OUTLET S.1/B.3/B.7 PW | 10 | 47238989 |
| SOCKET OUTLET S.1/B.3/B.7 ALU | 10 | 47431404 |
| SOCKET OUTLET S.1/B.3/B.7 ANTHRACI | 10 | 47431606 |
| SOCKET OUTLET S.1/B.3/B.7 PW | 10 | 47431909 |
| SOCKET OUTLET S.1/B.3/B.7 PW | 10 | 47438982 |
| SOCKET OUTLET S.1/B.3/B.7 PW | 10 | 47438989 |



47228982

SCHUKO 1-gang with cover plate

| Description | Pack qty. | Art No. |
|---|-----------|----------|
| S.1 SKO STD M STKL, KI, VL ADK HGL WEIß | 10 | 47228982 |
| SCHUKO soc. out. cover plate S.1/B.x pw | 10 | 47228989 |
| SCHUKO soc. out. cover plate S.1/B.x pw | 10 | 47229909 |
| S.1 SKO STD M STKL U VL ADK HGL WEIß | 10 | 47428982 |
| SCHUKO soc. out. cover plate S.1/B.x pw | 10 | 47428989 |
| SCHUKO soc. out. cover plate S.1/B.x pw | 10 | 47429909 |



47208982

SCHUKO 2-gang combi with frame

| Description | Pack qty. | Art No. |
|--|-----------|----------|
| S.1 SKO STD STKL 2X1F HGL WEIß | 5 | 47208982 |
| Comb. SCHUKO soc. out. 2G frame S.1 pw | 5 | 47208989 |
| S.1 SCHUKO-STECKDOSEN-KOMBINATION 2FAC.. | 5 | 47209909 |



47271404

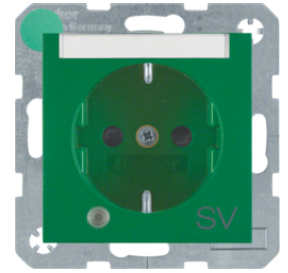
SCHUKO 45°

| Description | Pack qty. | Art No. |
|------------------------------------|-----------|----------|
| SOCKET OUTLET S.1/B.3/B.7 ALU | 10 | 47271404 |
| SOCKET OUTLET S.1/B.3/B.7 ANTHRACI | 10 | 47271606 |
| SOCKET OUTLET S.1/B.3/B.7 PW | 10 | 47271909 |
| SOCKET OUTLET S.1/B.3/B.7 PW | 10 | 47278982 |
| SOCKET OUTLET S.1/B.3/B.7 PW | 10 | 47278989 |



SCHUKO for special applications

| Description | Pack qty. | Art No. |
|--|-----------|----------|
| SKO-STD M LED ERHBS SFD S.1/B.3/B.7 GRÜ | 10 | 41101913 |
| SKO-STD M LED ERHBS SFD S.1/B.3/B.7 ORA | 10 | 41101914 |
| SKO-STD M LED ERHBS SFD S.1/B.3/B.7 ROT | 10 | 41101915 |
| SKO-STD M LED ERHBS SFD S.1/B.3/B.7 GRÜ | 10 | 41108913 |
| SKO-STD M LED ERHBS SFD S.1/B.3/B.7 ORA | 10 | 41108914 |
| SKO-STD M LED ERHBS SFD S.1/B.3/B.7 ROT | 10 | 41108915 |
| S.1/B.1/B.3/B.7 GLAS SCHUKO-STECKDOSE .. | 10 | 41431912 |
| S.1/B.1/B.3/B.7 GLAS SCHUKO-STECKDOSE .. | 10 | 41431913 |
| S.1/B.1/B.3/B.7 GLAS SCHUKO-STECKDOSE .. | 10 | 41431914 |
| S.1 SKO STD M SRBKL HGL ROT | 10 | 41438912 |
| S.1 SKO STD M SRBKL HGL GRÜN | 10 | 41438913 |
| S.1 SKO STD M SRBKL HGL ORANGE | 10 | 41438914 |
| S.1/B.1/B.3/B.7 GLAS SCHUKO-STECKDOSE .. | 10 | 47231914 |
| S.1 SKO STD M STKL U KI HGL ORANGE | 10 | 47238914 |
| SOCKET OUTLET S.1/B.3/B.7 GREEN | 10 | 47431903 |
| SOCKET OUTLET S.1/B.3/B.7 ORANGE | 10 | 47431907 |
| SOCKET OUTLET S.1/B.3/B.7 RED | 10 | 47431912 |
| SOCKET OUTLET S.1/B.3/B.7 GREEN | 10 | 47431913 |
| S.1/B.1/B.3 SCHUKO-STECKDOSE ORANGE MI.. | 10 | 47431914 |
| SOCKET OUTLET S.1/B.3/B.7 RED | 10 | 47431922 |
| SOCKET OUTLET S.1/B.3/B.7 GREEN | 10 | 47438903 |
| SOCKET OUTLET S.1/B.3/B.7 GREEN | 10 | 47438907 |
| SCHUKO soc. out., S.1/B.3/B.7, red | 10 | 47438912 |
| SCHUKO soc. out., S.1/B.3/B.7, green | 10 | 47438913 |
| S.1 SKO STD M STKL HGL ORANGE | 10 | 47438914 |
| SOCKET OUTLET S.1/B.3/B.7 RED | 10 | 47438922 |
| SOCKET OUTLET S.1/B.3/B.7 RED | 10 | 47501902 |
| B1 SCHUKO-STECKDOSE GRÜN MIT ZENTRALST.. | 10 | 47501903 |
| SOCKET OUTLET S.1/B.3/B.7 ORANGE | 10 | 47501907 |
| S.1/B.1/B.3 SCHUKO-STECKDOSE MIT AUFDR.. | 10 | 47501913 |
| S.1/B.1/B.3 SCHUKO-STECKDOSE MIT AUFDR.. | 10 | 47501914 |
| S.1/B.1/B.3 SCHUKO-STECKDOSE MIT AUFDR.. | 10 | 47501915 |
| SOCKET OUTLET S.1/B.3/B.7 RED | 10 | 47508902 |
| SOCKET OUTLET S.1/B.3/B.7 RED | 10 | 47508903 |
| SOCKET OUTLET S.1/B.3/B.7 RED | 10 | 47508907 |
| S.1 SKO STD M SL STKL BDR SV HGL GRÜN | 10 | 47508913 |
| S.1 SKO STD M SL STKL BDRZSV HGL ORAN | 10 | 47508914 |
| S.1 SKO STD M STKL U SL EDV HGL ROT | 10 | 47508915 |
| SOCKET OUTLET S.1/B.3/B.7 RED | 10 | 47508982 |
| SOCKET OUTLET S.1/B.3/B.7 RED | 10 | 47508989 |



41101913

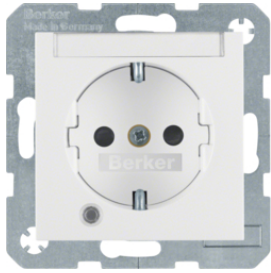
SCHUKO tripple outlet with cover plate

| Description | Pack qty. | Art No. |
|--|-----------|----------|
| S.1 SCHUKO-3FACH-STECKDOSE MIT ABDECKP.. | 5 | 47661909 |



47661909





41101909



SCHUKO with control LED and labeling field

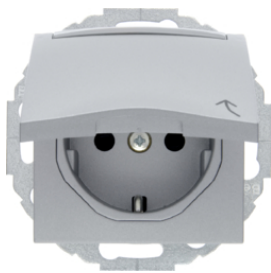
| Description | Pack qty. | Art No. |
|--|-----------|----------|
| SKO-STD M LED ERHBS SFD S.1/B.3/B.7 P-W | 10 | 41101909 |
| SKO-STD M LED ERHBS SFD S.1/B.3/B.7 WEIß | 10 | 41108982 |
| SKO-STD M LED ERHBS SFD S.1/B.3/B.7 P-W | 10 | 41108989 |



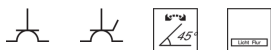
47441404

SCHUKO with hinged cover

| Description | Pack qty. | Art No. |
|--|-----------|----------|
| SOCKET OUTLET S.1/B.3/B.7 ALU | 10 | 47441404 |
| SOCKET OUTLET S.1/B.3/B.7 ANTHRACI | 10 | 47441606 |
| SOCKET OUTLET S.1/B.3/B.7 PW | 10 | 47441909 |
| SOCKET OUTLET S.1/B.3/B.7 PW | 10 | 47448982 |
| SOCKET OUTLET S.1/B.3/B.7 PW | 10 | 47448989 |
| SCHUKO so. hinged cover S1/Bx pol white | 10 | 47511909 |
| SCHUKO socket hinged cover S.1/B.3/B.7 w | 10 | 47518982 |
| SCHUKO socket hinged cover S.1/B.3/B.7 p | 10 | 47518989 |



47461404



SCHUKO with hinged cover and labeling field

| Description | Pack qty. | Art No. |
|------------------------------------|-----------|----------|
| SOCKET OUTLE S.1/B.3/B.7 ALU | 10 | 47461404 |
| SOCKET OUTLET S.1/B.3/B.7 ANTHRACI | 10 | 47461606 |
| SOCKET OUTLET S.1/B.3/B.7 PW | 10 | 47461909 |
| SOCKET OUTLET S.1/B.3/B.7 Wh | 10 | 47468982 |
| SOCKET OUTLET S.1/B.3/B.7 PW | 10 | 47468989 |



47441949

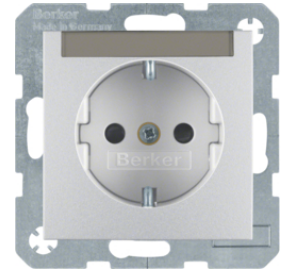


SCHUKO with hinged cover and touchable symbol

| Description | Pack qty. | Art No. |
|--|-----------|----------|
| SCHUKO so. hin. cov EHCP S.1/B.x pw matt | 10 | 47441949 |
| SCHUKO so. hin. cover S.1/B.x pw matt | 10 | 47861949 |

SCHUKO with labeling field

| Description | Pack qty. | Art No. |
|--|-----------|----------|
| S.1/B.1/B.3 SCHUKO-STECKDOSE MIT BESCH.. | 10 | 41491404 |
| S.1/B.1/B.3 SCHUKO-STECKDOSE MIT BESCH.. | 10 | 41491606 |
| S.1/B.1/B.7 GLAS SCHUKO-STECKDOSE MIT .. | 10 | 41491909 |
| SKO-STD M BSF S.1/B.3/B.7 WEIß | 10 | 41498982 |
| SKO-STD M BSF S.1/B.3/B.7 P-W | 10 | 41498989 |
| B1 SCHUKO-STECKDOSE ALU MIT ZENTRALSTÜ.. | 10 | 47491404 |
| B1 SCHUKO-STECKDOSE ANTHRACIT MIT ZENT.. | 10 | 47491606 |
| S.1/B.1 SCHUKO-STECKDOSE MIT BESCHRIFT.. | 10 | 47491909 |
| S.1SKO STD M.STKL, KI U BSF HGL WEIß | 10 | 47498982 |
| SCHUKO soc. out., S.1/B.x, pw | 10 | 47498989 |
| SOCKET OUTLET S.1/B.3/B.7 ALU | 10 | 47501404 |
| SOCKET OUTLET S.1/B.3/B.7 ANTHRACI | 10 | 47501606 |
| SOCKET OUTLET S.1/B.3/B.7 PW | 10 | 47501909 |



41491404



SCHUKO with LED orientation light

| Description | Pack qty. | Art No. |
|--|-----------|----------|
| SKO-STD SRBKL M LED AMBEL B.1 ALU MATT | 10 | 41091404 |
| SKO-STD SRBKL M LED AMBEL B.1 ANTH MATT | 10 | 41091606 |
| SCHUKO soc.out. LEDorient. S.1/B.x pw | 10 | 41091909 |
| SKO-STD SRBKL M LED AMBEL S.1/B.3/B.7 WE | 10 | 41098982 |
| SKO-STD SRBKL M LED AMBEL S.1/B.3/B.7 PW | 10 | 41098989 |



41091404



SCHUKO with overvoltage protection

| Description | Pack qty. | Art No. |
|--|-----------|----------|
| SOCKET OUTLET S.1/B.3/B.7 ALU | 1 | 41081404 |
| SOCKET OUTLET S.1/B.3/B.7 ANTHRACI | 1 | 41081606 |
| SOCKET OUTLET S.1/B.3/B.7 PW | 1 | 41081909 |
| S.1/B.1/B.3 ÜBERSpannungSSCHUTZ- SCHUK.. | 1 | 41081962 |
| SOCKET OUTLET S.1/B.3/B.7 PW | 1 | 41088962 |
| SOCKET OUTLET S.1/B.3/B.7 PW | 1 | 41088982 |
| Socket outlet S.1/B.3/B.7 PW | 1 | 41088989 |



41081404



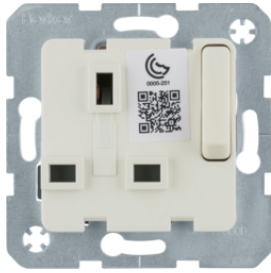
SCHUKO with residual current circuit-breaker

| Description | Pack qty. | Art No. |
|--|-----------|----------|
| SCHUKO soc.out. circuit-breaker S1/Bx pw | 1 | 47081909 |
| SOCKET OUTLET S.1/B.3/B.7 PW | 1 | 47088982 |
| SOCKET OUTLET S.1/B.3/B.7 PW | 1 | 47088989 |



47081909





53420212

BS socket outlet

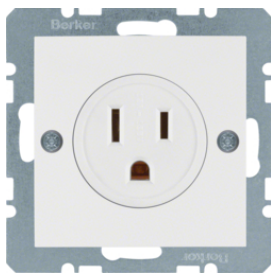
| Description | Pack qty. | Art No. |
|--|-----------|------------|
| 13A insert for socket outlet white w/o L | 10 | 53420212 |
| 13A insert for socket outlet anthracite | 10 | 53420216 |
| 13A insert for socket outlet p-w w/o LED | 10 | 53420219 |
| 13A insert for socket outlet brown w/o L | 10 | 53420211 |
| BS Socket Coverplate Aluminium Matt | 10 | 3313071404 |
| BS Socket Coverplate Anthracite Matt | 10 | 3313071606 |
| BS Socket Coverplate Polar White Glossy | 10 | 3313078989 |
| BS Socket Coverplate Polar White Matt | 10 | 3313079909 |



6765768982

Socket outlet with earthing pin

| Description | Pack qty. | Art No. |
|-------------------------------|-----------|------------|
| S.1 2P STD+E-ST M KI HGL WEIß | 10 | 6765768982 |
| S.1 2P STD+E-ST M KI HGL P-W | 10 | 6765768989 |
| SOCKET F/B P.W. B.1 | 10 | 6765761909 |
| SOCKET F/B ANTHRACITE B.1 | 10 | 6765761606 |
| SOCKET F/B ALU B.1 | 10 | 6765761404 |



41661909

NEMA socket outlet

| Description | Pack qty. | Art No. |
|---------------------------|-----------|----------|
| SOCKET 15 A, 125 V, 55X55 | 10 | 41661909 |
| SOCKET 15 A, 125 V, 55X55 | 10 | 41668982 |
| SOCKET 15 A, 125 V, 55X55 | 10 | 41668989 |
| SOCKET 15 A, 125 V, 55X55 | 10 | 41681909 |
| SOCKET 15 A, 125 V, 55X55 | 10 | 41688982 |
| SOCKET 15 A, 125 V, 55X55 | 10 | 41688989 |



3344758606

Shaver socket outlet

| Description | Pack qty. | Art No. |
|-------------------------------|-----------|------------|
| S.1 Shaver socket, anthracite | 1 | 3344758606 |



6167031909

Socket outlet without earthing contact

| Description | Pack qty. | Art No. |
|--|-----------|------------|
| B.1 STECKDOSE POLARWEIß, DAMASZIERT 2P.. | 10 | 6167031909 |
| STD 2P S.1/B.3/B.7 WEIß | 10 | 6167038982 |
| Soc. out. out earth. cont., S.1/B.x, pw | 10 | 6167038989 |
| B.1 STECKDOSE ALU 2POLIG OHNE KRALLEN .. | 10 | 6167331404 |
| B.1 STECKDOSE ANTHRACIT 2POLIG OHNE KR.. | 10 | 6167331606 |
| B.1 STECKDOSE POLARWEIß, DAMASZIERT 2P.. | 10 | 6167331909 |

Rocker 1-gang

| Description | Pack qty. | Art No. |
|--|-----------|-----------------|
| Rocke B. aluminium, mat | 10 | 16201404 |
| Rocke B.3/B. anthracite, mat | 10 | 16201606 |
| Rocke S.1/B.3/B.7 polar white, ma | 10 | 16201909 |
| Rocke S. white, gloss | 10 | 16208982 |
| Rocker S.1/B.3/B.7 polar white, glossy | 10 | 16208989 |



16201404

Rocker 1-gang with big labeling field and lens/imprints

| Description | Pack qty. | Art No. |
|------------------------|-----------|-----------------|
| ROCKER S.1/B.3/B.7 ALU | 10 | 16961404 |
| ROCKER S.1/B.3/B.7 ALU | 10 | 16961606 |
| ROCKER S.1/B.3/B.7 PW | 10 | 16961909 |
| ROCKER S.1/B.3/B.7 ALU | 10 | 16968982 |
| ROCKER S.1/B.3/B.7 ALU | 10 | 16968989 |



16961404



Rocker 1-gang with labeling field

| Description | Pack qty. | Art No. |
|--------------------------------|-----------|-----------------|
| ROCKER S.1/B.3/B.7 ALU | 10 | 16261404 |
| ROCKER S.1/B.3/B.7 ANTHRACITE | 10 | 16261606 |
| ROCKER S.1/B.3/B.7 POLAR WHITE | 10 | 16261909 |
| ROCKER S.1/B.3/B.7 POLAR WHITE | 10 | 16268982 |
| ROCKER S.1/B.3/B.7 POLAR WHITE | 10 | 16268989 |



16261404



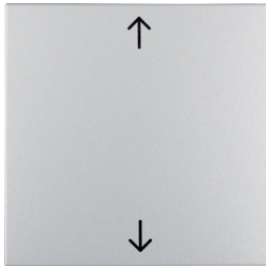
Rocker 1-gang with labeling field and lens/imprints

| Description | Pack qty. | Art No. |
|--------------------------------|-----------|-----------------|
| ROCKER S.1/B.3/B.7 ALU | 10 | 16281404 |
| ROCKER S.1/B.3/B.7 ANTHRACITE | 10 | 16281606 |
| ROCKER S.1/B.3/B.7 POLAR WHITE | 10 | 16281909 |



16281404





16201414

Rocker 1-gang with lens/imprints

| Description | Pack qty. | Art No. |
|---|-----------|----------|
| Rocker with imprinted arrows symbo Berk | 10 | 16201414 |
| Rocker with imprinted arrows symbo Berk | 10 | 16201616 |
| Rocker with imprinted arrows symbo Berk | 10 | 16201919 |
| Rocker with imprinted arrows symbo Berk | 10 | 16208912 |
| Rocker with imprinted arrows symbo Berk | 10 | 16208919 |
| Rocker w/5 lenses attached - B alu | 10 | 16211404 |
| Rocker w/5 lenses attached - B ant | 10 | 16211606 |
| ROCKER B1 RED | 10 | 16211902 |
| Rocker w/5 lenses attached - S/B PW | 10 | 16211909 |
| ROCKER B1 RED | 10 | 16218902 |
| ROCKER S.1/B.3/B.7 POLAR WHITE | 10 | 16218982 |
| ROCKER S.1/B.3/B.7 POLAR WHITE | 10 | 16218989 |
| ROCKER S.1/B.3/B.7 ALU | 10 | 16221404 |
| ROCKER S.1/B.3/B.7 ANTHRACITE | 10 | 16221606 |
| ROCKER S.1/B.3/B.7 POLAR WHITE | 10 | 16221909 |
| ROCKER S.1/B.3/B.7 POLAR WHITE | 10 | 16228982 |
| ROCKER S.1/B.3/B.7 POLAR WHITE | 10 | 16228989 |
| Rocker w/red lens & imprint "0" - B alu | 10 | 16241404 |
| Rocker w/red lens & imprint "0" - B ant | 10 | 16241606 |
| Rocker w/red lens & imprint "0"- S/B PW | 10 | 16241909 |
| ROCKER S.1/B.3/B.7 POLAR WHITE | 10 | 16248982 |
| ROCKER S.1/B.3/B.7 POLAR WHITE | 10 | 16248989 |
| ROCKER S.1/B.3/B.7 POLAR WHITE | 10 | 16288982 |
| ROCKER S.1/B.3/B.7 POLAR WHITE | 10 | 16288989 |



16511949

Rocker 1-gang with touchable symbol/lens

| Description | Pack qty. | Art No. |
|--|-----------|----------|
| S.1/B.1 WIPPE MIT ROTER LINSE UND ABTA.. | 10 | 16511949 |
| S.1/B.1 WIPPE MIT ROTER LINSE UND ABTA.. | 10 | 16511959 |
| S.1/B.1 WIPPE MIT ROTER LINSE UND ABTA.. | 10 | 16511969 |
| S.1/B.1 WIPPE MIT 5 BEILIEGENDEN LINSE.. | 10 | 16611949 |



15701404

Rocker 1-gang, screw-on

| Description | Pack qty. | Art No. |
|-----------------|-----------|----------|
| Rocker screw-on | 10 | 15701404 |
| Rocker screw-on | 10 | 15701606 |
| Rocker screw-on | 10 | 15701909 |



15721404

Rocker 1-gang, screw-on with lens/imprints

| Description | Pack qty. | Art No. |
|--|-----------|----------|
| Rocker screw-on with 5 lenses attached | 10 | 15721404 |
| Rocker screw-on with 5 lenses attached | 10 | 15721606 |
| Rocker screw-on with 5 lenses attached | 10 | 15721909 |
| Rocker screw-on with imprint "0" | 10 | 15731404 |
| S.1/B.1/B.7 GLAS WIPPE ANSCHRAUBBAR MI.. | 10 | 15731606 |
| S.1/B.1/B.3/B.7 GLAS WIPPE ANSCHRAUBBA.. | 10 | 15731909 |
| B.1/B.7 GLAS WIPPE ANSCHRAUBBAR MIT RO.. | 10 | 15771404 |
| B.1/B.3/B.7 GLAS WIPPE ANSCHRAUBBAR MI.. | 10 | 15771606 |
| S.1/B.1/B.3/B.7 GLAS WIPPE ANSCHRAUBBA.. | 10 | 15771909 |

Rocker 2-gang

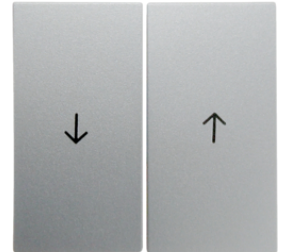
| Description | Pack qty. | Art No. |
|----------------------------------|-----------|-----------------|
| Rocker B. aluminium, mat | 10 | 16231404 |
| Rocker B.3/B. anthracite, mat | 10 | 16231606 |
| Rocker S.1/B.3/B. polar white, m | 10 | 16231909 |
| Rocker S. white, gloss | 10 | 16238982 |
| Rocker S.1/B.3/B. polar white, g | 10 | 16238989 |



16231404

Rocker 2-gang with lens/imprints

| Description | Pack qty. | Art No. |
|--|-----------|-----------------|
| Rockers with imprinted arrow symbo Berk | 10 | 16251404 |
| Rockers with imprinted arrow symbo Berk | 10 | 16251606 |
| Rockers with imprinted arrow symbo Berk | 10 | 16251909 |
| Rockers with imprinted arrow symbo Berk | 10 | 16258982 |
| Rockers with imprinted arrow symbo Berk | 10 | 16258989 |
| Rockers with red lens-B series alu, matt | 10 | 16271404 |
| Rockers with red lens-B series Ant, matt | 10 | 16271606 |
| Rockers with red lens -B series PW, matt | 10 | 16271909 |
| ROCKER S.1/B.3/B.7 POLAR WHITE | 10 | 16278982 |
| ROCKER S.1/B.3/B.7 POLAR WHITE | 10 | 16278989 |
| Rockers with imprinted arrows symbo Ber | 10 | 16441404 |
| Rockers with imprinted arrows symbo Ber | 10 | 16441606 |
| Rockers with imprinted arrows symbo Ber | 10 | 16441909 |
| Rockers with imprinted arrows symbo Ber | 10 | 16448982 |
| Rockers with imprinted arrows symbo Ber | 10 | 16448989 |



16251404

Rocker 2-gang, screw-on

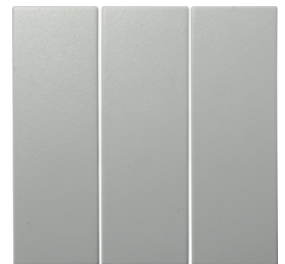
| Description | Pack qty. | Art No. |
|------------------|-----------|-----------------|
| Rockers screw-on | 10 | 15711404 |
| Rockers screw-on | 10 | 15711606 |
| Rockers screw-on | 10 | 15711909 |



15711404

Rocker 3-gang

| Description | Pack qty. | Art No. |
|-----------------------|-----------|-----------------|
| 3gang rocker - S/B PW | 10 | 16651909 |
| ROCKER B.1/B.3 PW | 10 | 16658989 |



16651909



16408984



Electronic hotel card switch

| Description | Pack qty. | Art No. |
|--|-----------|-----------------|
| Hotel card switch electronic Q.x alu | 1 | 16408984 |
| Hotel card switch electronic S.1/B.3/B.7 | 1 | 16408992 |
| Hotel card switch electronic S.1/B.3/B.7 | 1 | 16408999 |
| Hotel card switch electronic S/B anthr. | 1 | 16409906 |
| Hotel card switch electronic S/B polarw | 1 | 16409909 |



51018982



Stairwell push button

| Description | Pack qty. | Art No. |
|--|-----------|-----------------|
| STIEGENHAUS-TA E10 KPL S.1/B.3/B.7 WEIß | 10 | 51018982 |
| PB complete for stairway light S.1 pw | 10 | 51018989 |
| STIEGENHAUS-TA E10 KPL S.1/B.3/B.7 P-W M | 10 | 51019909 |

LED signal light, RGB

| Description | Pack qty. | Art No. |
|--|-----------|-----------------|
| LED LICHTS RGB M DES Z-RA S.1/B.X PW GLÄ | 1 | 29518989 |
| LED LICHTS RGB M DES Z-RA S.1/B.X WEIß | 1 | 29518982 |
| LED LICHTS RGB M DES Z-RA S.1/B.X PW MAT | 1 | 29511909 |
| LED LICHTS RGB M DES Z-RA S.1/B.X ALU LA | 1 | 29511404 |
| LED LICHTS RGB M DES Z-RA S.1/B.X ANTH M | 1 | 29511606 |

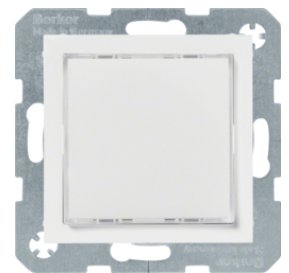


29518989



LED signal light, white lighting

| Description | Pack qty. | Art No. |
|--|-----------|-----------------|
| LED signal light, white light S.1/B.x pw | 1 | 29538989 |
| LED LICHTS WEIß M DES Z-RA S.1/B.X WEIß | 1 | 29538982 |
| LED LICHTS WEIß M DES Z-RA S.1/B.X P-W | 1 | 29531909 |
| LED LICHTS WEIß M DES Z-RA S.1/B.X ALU | 1 | 29531404 |
| LED LICHTS WEIß M DES Z-RA S.1/B.X ANTH | 1 | 29531606 |

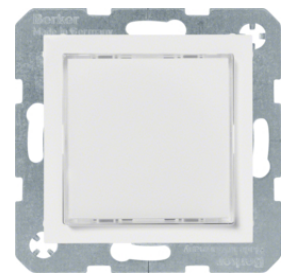


29538989



LED light signal, red/green lighting

| Description | Pack qty. | Art No. |
|--|-----------|-----------------|
| LED signal light, red/green light S.1 pw | 1 | 29528989 |
| LED LICHTS ROT/GRÜ DES Z-RA S.1/B.X WEIß | 1 | 29528982 |
| LED LICHTS ROT/GRÜ M DES Z-RA S.1/B.X PW | 1 | 29521909 |
| LED LICHTS ROT/GRÜ DES Z-RA S.1/B.X ALU | 1 | 29521404 |
| LED LICHTS ROT/GRÜ DES Z-RA S.1/B.X ANTH | 1 | 29521606 |



29528989



Foil with imprinted symbol for LED signal light

| Description | Pack qty. | Art No. |
|----------------------------|-----------|-----------------|
| FOLIE ECKIG M AD MANN | 1 | 19058001 |
| FOLIE ECKIG M AD ROLLSTUHL | 1 | 19058003 |
| FOLIE ECKIG M AD TREPPEN | 1 | 19058004 |
| FOLIE ECKIG M AD AUFZUG | 1 | 19058005 |



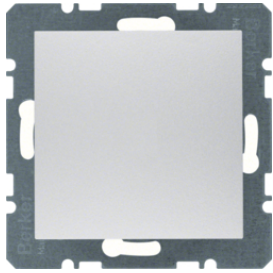
19058001

Foil bi-colour with imprinted symbol for LED light signal

| Description | Pack qty. | Art No. |
|--|-----------|-----------------|
| FOLIE ECKIG M AD DND/MUR BI-COLOR | 1 | 19058011 |
| FOLIE ECKIG AD EINTRETEN/WARTEN BI-COLOR | 1 | 19058012 |



19058011

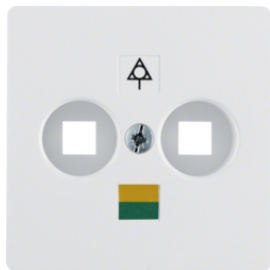


10091404



Blank plate

| Description | Pack qty. | Art No. |
|--|-----------|------------|
| Blankplate with c/plate - B series alu | 20 | 10091404 |
| B.1 BLINDVERSCHLUSS MIT ZENTRALSTÜCK U.. | 20 | 10091414 |
| Blank plate with C/plate - B ant | 20 | 10091606 |
| B/plate with C/p & screw-fixing - B ant | 20 | 10091616 |
| Blankplate with c/plate S/B PW, matt | 20 | 10091909 |
| B/plate with C/p & screw-fixing - S/B PW | 20 | 10091919 |
| BLANK PLATE W.CENTRE PLAT | 20 | 10098912 |
| BLANK PLATE W.CENTRE PLAT | 20 | 10098919 |
| BLANK PLATE B1 PW | 20 | 10098982 |
| BLANK PLATE B1 PW | 20 | 10098989 |
| BLANK PLATE B1 ALU | 10 | 6710091404 |
| BLANK PLATE B1 ANTHRACITE | 10 | 6710091606 |
| BLANK PLATE B1 PW | 10 | 6710091909 |
| BLANK PLATE B1 PW | 10 | 6710098982 |
| BLANK PLATE B1 PW | 10 | 6710098989 |



140309

Centre plate double pole socket

| Description | Pack qty. | Art No. |
|-----------------|-----------|---------|
| CENTRE PLATE PW | 10 | 140309 |



10191909

centre plate for cable outlet

| Description | Pack qty. | Art No. |
|---|-----------|----------|
| C/plate for Cable outlet & VDo - S/B PW | 10 | 10191909 |
| CENTRE PLATE B1 PW | 10 | 10198982 |
| CENTRE PLATE B1 PW | 10 | 10198989 |



14271606

for 3 MINI-COM module system

| Description | Pack qty. | Art No. |
|---|-----------|----------|
| CENTRE PLATE ANTHRACIT | 10 | 14271606 |
| Central Plate for 3 mini-Com Mod, White | 10 | 14271909 |

for aerial socket outlet

| Description | Pack qty. | Art No. |
|--|-----------|-----------------|
| C/p for aerial 2 & 3-hole - B alu | 10 | 12031404 |
| CENTRE PLATE B1 ANTHRACIT | 10 | 12031606 |
| C/p for aerial 2 & 3-hole - S/B PW | 10 | 12031909 |
| Z-ST F ANT-STD 2- U 3 LOCH S.1 WEIß | 10 | 12038982 |
| C. plate for aerial soc. 2/3hole S.1 pw | 10 | 12038989 |
| Central Plate Aerial Socket 4 Hole White | 10 | 14831909 |
| CENTRE PLATE ALU | 10 | 14841404 |
| CENTRE PLATE ANTHRACIT | 10 | 14841606 |
| Centre Plate Aerial Socket 4 Hole, White | 10 | 14841909 |



12031404

for cable outlet

| Description | Pack qty. | Art No. |
|--|-----------|-----------------|
| C/plate for cable outlet & VDo - B alu | 10 | 10191404 |
| CENTRE PLATE B1 ANTHRACIT | 10 | 10191606 |



10191404

for FCC (RJ45) outlets

| Description | Pack qty. | Art No. |
|--|-----------|-----------------|
| Centre Plate, 1 Slider, Aluminium Matt | 10 | 11701404 |
| Centre Plate, 1 Slider, Anthracite Matt | 10 | 11701606 |
| Centre Plate, 1 Slider, Polar white Matt | 10 | 11701909 |
| Centre Plate, 2 Slider, Aluminium Matt | 10 | 11811404 |
| Centre Plate, 2 Slider, Anthracite Matt | 10 | 11811606 |
| Centre Plate, 2 Slider, Polar White Matt | 10 | 11811909 |
| Centre Plate, 2 Slider, White Glossy | 10 | 11818982 |
| Centre Plate, 2 Slider, Polar White Glos | 10 | 11818989 |
| Centre plate for FCC 1g conn. box -B alu | 10 | 14071404 |
| Centre plate for FCC 1g conn. box -B ant | 10 | 14071606 |
| Centre plate for FCC 1g conn. box -B PW | 10 | 14071909 |
| Z-ST F UAE-ASD S.1 WEIß | 10 | 14078982 |
| C. plate for FCC soc. out. S.1 pw | 10 | 14078989 |
| Centre plate for FCC 2g conn. box -B alu | 10 | 14091404 |
| Centre plate for FCC 2g conn. box -B ant | 10 | 14091606 |
| FCC S/O C/PLATE (TWIN) - S1 P/WHITE | 10 | 14091909 |
| Z-ST F UAE/EDAT DESTK ISDN-ASD S.1 WEIß | 10 | 14098982 |
| C. plate for FCC soc. out. 2gang S.1 pw | 10 | 14098989 |



11701404

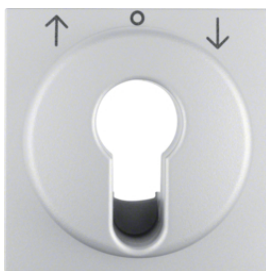
For hotelcard switch

| Description | Pack qty. | Art No. |
|--|-----------|-----------------|
| C/plate for hotel card - B alu | 10 | 16401404 |
| C/plate for hotel card - B ant | 10 | 16401606 |
| C/p for Hotelcard switch - S1/B PW | 10 | 16401909 |
| HOTELC-SCH BDR U ROT LN S.1/B.3/B.7 WEIß | 10 | 16408982 |
| HOTELC-SCH BDR U ROT LN S.1/B.3/B.7 P-W | 10 | 16408989 |



16401404





15061404

for key switch/key push button

| Description | Pack qty. | Art No. |
|--|-----------|----------|
| Centre plate for key switch/key push-but | 10 | 15061404 |
| Centre plate for key switch/key push-but | 10 | 15061606 |
| Centre plate for key switch/key push-but | 10 | 15061909 |
| Centre plate for key switch/key push-but | 10 | 15068982 |
| Centre plate for key switch/key push-but | 10 | 15068989 |
| Centre plate for key switch/key push-but | 10 | 15071404 |
| Centre plate for key switch/key push-but | 10 | 15071606 |
| Centre plate for key switch/key push-but | 10 | 15071909 |
| Centre plate for key switch/key push-but | 10 | 15078982 |
| Centre plate for key switch/key push-but | 10 | 15078989 |



11241404

for light signals

| Description | Pack qty. | Art No. |
|------------------------------------|-----------|----------|
| CENTRE PLATE B1 ALU | 10 | 11241404 |
| CENTRE PLATE B1 ANTHRACIT | 10 | 11241606 |
| CENTRE PLATE B1 PW | 10 | 11241909 |
| CENTRE PLATE B1 PW | 10 | 11248982 |
| CENTRE PLATE B1 PW | 10 | 11248989 |
| CENTRE PLATE S.1/B.3/B.7 ALU | 10 | 11981404 |
| CENTRE PLATE S.1/B.3/B.7 ANTHRACIT | 10 | 11981606 |
| CENTRE PLATE S.1/B.3/B.7 PW | 10 | 11981909 |
| Z-ST F LICHTS E14 S.1/B.3/B.7 WEIß | 10 | 11988982 |
| Z-ST F LICHTS E14 S.1/B.3/B.7 P-W | 10 | 11988989 |



11961404

for loudspeaker outlet

| Description | Pack qty. | Art No. |
|--------------------------------------|-----------|----------|
| C/plate for loudspeaker S/O - B alu | 10 | 11961404 |
| C/plate for loudspeaker S/O - B ant | 10 | 11961606 |
| C/plate for loudspeaker S/O - S/B PW | 10 | 11961909 |
| -ST F LSP-STD 1F S.1 WEIß | 10 | 11968982 |
| Z-ST F LSP-STD 1F S.1 P-W | 10 | 11968989 |



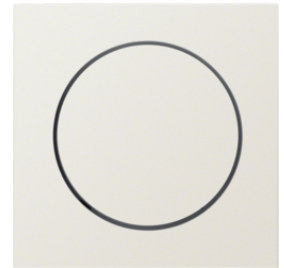
11461404

for pullcord switch/button

| Description | Pack qty. | Art No. |
|--------------------------------------|-----------|----------|
| CENTRE PLATE S.1/B.3/B.7 ALU | 10 | 11461404 |
| CENTRE PLATE S.1/B.3/B.7 ANTHRACIT | 10 | 11461606 |
| CENTRE PLATE S.1/B.3/B.7 PW | 10 | 11461909 |
| Z-ST F Z-SCH U Z-TA S.1/B.3/B.7 WEIß | 10 | 11468982 |
| Z-ST F Z-SCH U Z-TA S.1/B.3/B.7 P-W | 10 | 11468989 |

for rotary dimmer incl. setting knob

| Description | Pack qty. | Art No. |
|--|-----------|-----------------|
| CENTRE PLATE S.1/B.3/B.7 PW | 10 | 11378982 |
| CENTRE PLATE S.1/B.3/B.7 PW | 10 | 11378989 |
| C/p w/setting knob for r/dimmer - B alu | 10 | 11371404 |
| C/p w/setting knob for r/dimmer - B ant | 10 | 11371606 |
| C/p w/setting knob for r/dimmer -S1/B PW | 10 | 11371909 |

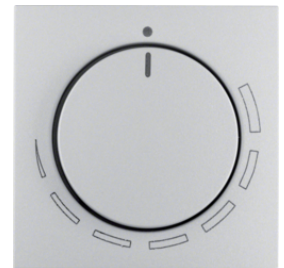


11378982



for speed controller incl. setting knob

| Description | Pack qty. | Art No. |
|--|-----------|-----------------|
| CENTRE PL.WITH KNOB B.1 | 10 | 11371424 |
| C/p w/setting knob for speed cont.-B ant | 10 | 11371626 |
| C/p w/setting knob for Fan Reg. - S/B PW | 10 | 11371929 |
| CENTRE PL.WITH KNOB B.1 | 10 | 11378922 |
| CENTRE PL.WITH KNOB B.1 | 10 | 11378929 |



11371424



for thermostat, time controlled

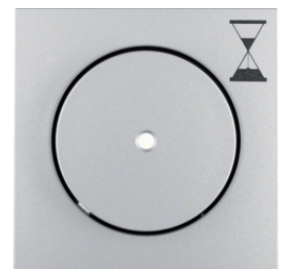
| Description | Pack qty. | Art No. |
|--|-----------|-----------------|
| CENTRE PLATE B.1 ALU | 1 | 11161404 |
| CENTRE PLATE B.1 ANTHRACI | 1 | 11161606 |
| CENTRE PLATE B.1 PW | 1 | 11161909 |
| RAUMTEMPERATURREGLER MIT WECHSELKONTAK.. | 1 | 11168982 |
| RAUMTEMPERATURREGLER MIT WECHSELKONTAK.. | 1 | 11168989 |



11161404

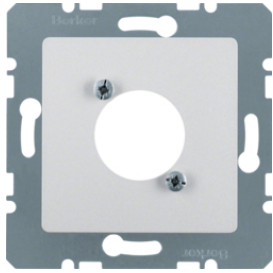
for timer relay switch

| Description | Pack qty. | Art No. |
|--|-----------|-----------------|
| B.1/B.7 GLAS ZENTRALSTÜCK MIT DRUCKKNO.. | 10 | 16741404 |
| B.1/B.3/B.7 GLAS ZENTRALSTÜCK MIT DRUC.. | 10 | 16741606 |
| S.1/B.1/B.7 GLAS ZENTRALSTÜCK MIT DRUC.. | 10 | 16741909 |
| S.1 Z-ST M DRUCKKNOPF HGL WEIß | 10 | 16748982 |
| S.1 Z-ST M DRUCKKNOPF HGL P-W | 10 | 16748989 |



16741404

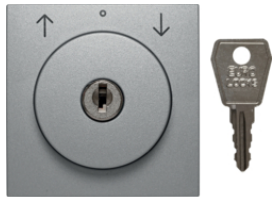




14121404

for XLR circular plug-in connector

| Description | Pack qty. | Art No. |
|--|-----------|----------|
| CENTRE PLATE ALU | 10 | 14121404 |
| CENTRE PLATE ANTHRACIT | 10 | 14121606 |
| Central Plate XLR D-Series Connector whi | 10 | 14121909 |

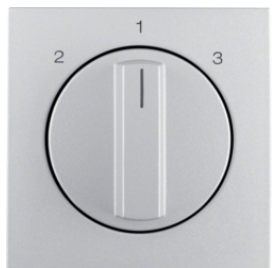


10811404



with lock for blind key switch/push button

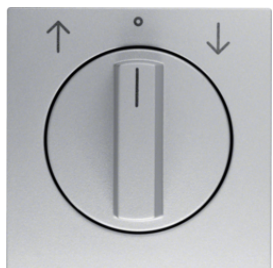
| Description | Pack qty. | Art No. |
|---------------------------|-----------|----------|
| CENTRE PLATE B1 ALU | 1 | 10811404 |
| CENTRE PLATE B1 ANTHRACIT | 1 | 10811606 |
| CENTRE PLATE B1 PW | 1 | 10811909 |
| CENTRE PLATE B1 PW | 1 | 10818982 |
| CENTRE PLATE B1 PW | 1 | 10818989 |
| CENTRE PLATE B1 PW | 1 | 10821909 |
| CENTRE PLATE B1 PW | 1 | 10828982 |
| CENTRE PLATE B1 PW | 1 | 10828989 |
| CENTRE PLATE B1 PW | 1 | 10831909 |
| CENTRE PLATE B1 PW | 1 | 10838982 |
| CENTRE PLATE B1 PW | 1 | 10838989 |



10841404

with rotary knob for 3-step switch

| Description | Pack qty. | Art No. |
|--|-----------|----------|
| CENTRE PLATE B1 ALU | 1 | 10841404 |
| CENTRE PLATE B1 ANTHRACIT | 1 | 10841606 |
| C/p w/rotary knob for 3-step sw-S.1/B PW | 1 | 10841909 |
| CENTRE PLATE B1 PW | 1 | 10848982 |
| CENTRE PLATE B1 PW | 1 | 10848989 |
| C/p w/rotary knob for 3-step sw-S1/B alu | 1 | 10961404 |
| CENTRE PLATE B1 ANTHRACIT | 1 | 10961606 |
| C/p w/rotary knob for 3-step sw-S.1/B PW | 1 | 10961909 |
| CENTRE PLATE B1 PW | 1 | 10968982 |
| CENTRE PLATE B1 PW | 1 | 10968989 |



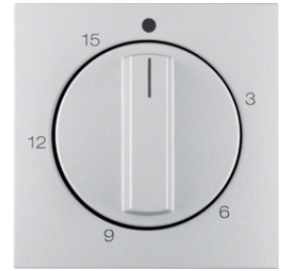
10801404

with rotary knob for blind rotary switch

| Description | Pack qty. | Art No. |
|---------------------------|-----------|----------|
| CENTRE PLATE B1 ALU | 1 | 10801404 |
| CENTRE PLATE B1 ANTHRACIT | 1 | 10801606 |
| CENTRE PLATE B1 PW | 1 | 10801909 |
| CENTRE PLATE B1 PW | 1 | 10808982 |
| CENTRE PLATE B1 PW | 1 | 10808989 |

with rotary knob for mechanical time switch

| Description | Pack qty. | Art No. |
|--|-----------|-----------------|
| COVER PLATE S.1/B.3/B.7 ALU | 1 | 16321404 |
| COVER S.1/B.3/B.7 ANTHRACITE | 1 | 16321606 |
| COVER S.1/B.3/B.7 POLAR WHITE | 1 | 16321909 |
| COVER S.1/B.3/B.7 POLAR WHITE | 1 | 16328982 |
| COVER S.1/B.3/B.7 POLAR WHITE | 1 | 16328989 |
| COVER S.1/B.3/B.7 ALU | 1 | 16331404 |
| COVER S.1/B.3/B.7 ANTHRACITE | 1 | 16331606 |
| C/PLATE W/SETTING KNOB -MECH.TIMER 0-120 | 1 | 16331909 |
| COVER S.1/B.3/B.7 POLAR WHITE | 1 | 16338982 |
| COVER S.1/B.3/B.7 POLAR WHITE | 1 | 16338989 |



16321404

with TAE output

| Description | Pack qty. | Art No. |
|--|-----------|-----------------|
| CENTRE PLATE S.1/B.3/B.7 ALU | 10 | 10331404 |
| CENTRE PLATE S.1/B.3/B.7 ANTHRACIT | 10 | 10331606 |
| C/plate for TAE & loudspeaker - S/B PW | 10 | 10331909 |
| CENTRE PLATE F.TAE SOCKET | 10 | 10338912 |
| CENTRE PLATE F.TAE SOCKET | 10 | 10338919 |



10331404

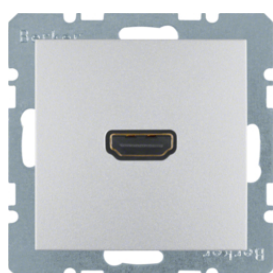


3315401404



VGA outlet

| Description | Pack qty. | Art No. |
|---------------------------------------|-----------|------------|
| BMO VGA B.X ALU MATT LACQ. | 10 | 3315401404 |
| BMO VGA B.X ANTH MATT | 10 | 3315401606 |
| VGA socket - S.1/B.1/B.3/B.7 Glass PW | 10 | 3315401909 |
| BMO VGA S1 WEIß | 10 | 3315408982 |
| BMO VGA S1 P-W | 10 | 3315408989 |
| BMO VGA-PCB B.X ALU MATT | 10 | 3315411404 |
| BMO VGA-PCB B.X ANTH MATT | 10 | 3315411606 |
| BMO VGA-PCB S.1 P-W MATT | 10 | 3315411909 |
| BMO VGA-PCB S1 WEIß | 10 | 3315418982 |
| BMO VGA-PCB S1 P-W | 10 | 3315418989 |

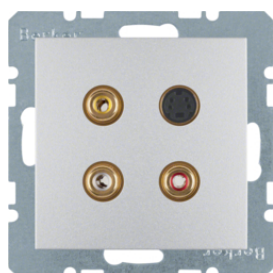


3315421404



HDMI outlet

| Description | Pack qty. | Art No. |
|--|-----------|------------|
| BMO HDMI B.X ALU MATT LACQ. | 10 | 3315421404 |
| BMO HDMI B.X ANTH MATT | 10 | 3315421606 |
| High definition socket - S.1/B PW, matt | 10 | 3315421909 |
| BMO HDMI S1 WEIß | 1 | 3315428982 |
| HD soc. out., S.1/B.3/B.7, pw | 1 | 3315428989 |
| BMO HDMI-CABLE B.X ALU MATT | 10 | 3315431404 |
| BMO HDMI-CABLE B.X ANTH MATT | 10 | 3315431606 |
| BMO HDMI-CABLE S.1 P-W MATT | 10 | 3315431909 |
| BMO HDMI-CABLE S1 WEIß | 10 | 3315438982 |
| HD soc. out. 90° plug connect S.1/B.x pw | 10 | 3315438989 |

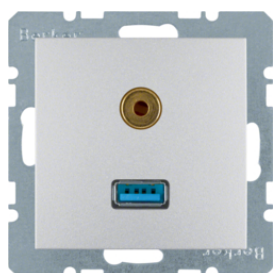


3315321404



3x Cinch / S-Video outlet

| Description | Pack qty. | Art No. |
|--|-----------|------------|
| 3xCinch/S-Video socket polar white, matt | 10 | 3315321404 |
| BMO CINCH/S-VIDEO B.X ANTH MATT | 10 | 3315321606 |
| 3 x cinch / S-Video socket - S/B PW | 10 | 3315321909 |
| BMO CINCH/S-VIDEO S1 WEIß | 10 | 3315328982 |
| BMO CINCH/S-VIDEO S1P-W | 10 | 3315328989 |



3315391404



USB / 3.5mm Audio outlet

| Description | Pack qty. | Art No. |
|--|-----------|------------|
| BMO USB/3.5MM AUDIO B.X ALU MATT LACQ. | 10 | 3315391404 |
| BMO USB/3.5MM AUDIO B.X ANTH MATT | 10 | 3315391606 |
| BMO USB/3.5MM AUDIO S1 WEIß | 10 | 3315398982 |
| BMO USB/3.5MM AUDIO S1 P-W | 10 | 3315398989 |

Loudspeaker

| Description | Pack qty. | Art No. |
|--------------------------------|--------------|---------------|
| kallystaCeiling loudspeaker | 2 | WUZ671 |
| kallystaCeiling loudspeaker 2" | 1 | WUZ672 |



WUZ671





11091404

Intermediate ring

| Description | Pack qty. | Art No. |
|--|--------------|-----------------|
| INTERMEDIARY B1 ALU | 10 | 11091404 |
| B.1/B.7 GLAS ZWISCHENRING FÜR ZENTRALS.. | 10 | 11091414 |
| Intermediate ring for c/plate - B ant | 10 | 11091606 |
| B.1/B.3/B.7 GLAS ZWISCHENRING FÜR ZENT.. | 10 | 11091616 |
| Intermediate ring for c/plate - S/B PW | 10 | 11091909 |
| S.1/B.1/B.3/B.7 GLAS ZWISCHENRING FÜR .. | 10 | 11091919 |
| Z-RING F Z-PL S.1 WEIß | 10 | 11098982 |
| Intermediate ring for c. plate S.1 pw | 10 | 11098989 |

for 6-pole socket outlet

| Description | Pack qty. | Art No. |
|-----------------|-----------|-----------------|
| CENTRE PLATE PW | 10 | 14741909 |



14741909

for Ackermann inserts

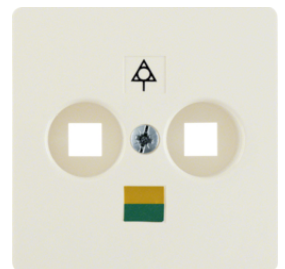
| Description | Pack qty. | Art No. |
|--|-----------|-----------------|
| Z-ST F BUS-ANSW / LEEREINHEIT S.1 WEIß | 10 | 12048982 |
| Z-ST F BUS-ANSW / LEEREINHEIT S.1 P-W | 10 | 12048989 |
| S.1 ZENTRALSTÜCK FÜR BUSABSCHLUSSWEICH.. | 10 | 12049909 |



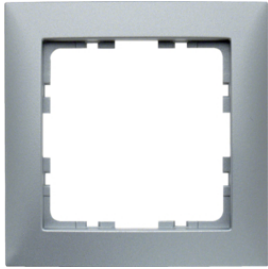
12048982

for double pole socket

| Description | Pack qty. | Art No. |
|-------------------|-----------|---------------|
| CENTRE PLATE WHIT | 10 | 140302 |



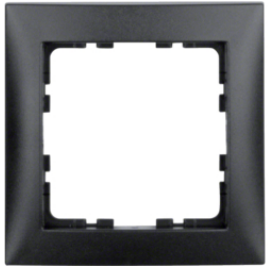
140302



10119939

aluminum, matt

| Description | Pack qty. | Art No. |
|---------------------------------|-----------|----------|
| S.1 Frame 1-gang Aluminium Matt | 10 | 10119939 |



10119945

anthracite, matt

| Description | Pack qty. | Art No. |
|----------------------------------|-----------|----------|
| Contrast frame, 1-gan S. anthrac | 10 | 10119945 |
| S.1 Frame 1-gang Anthracite Matt | 10 | 10119949 |
| S.1 Frame 2-gang Anthracite Matt | 10 | 10129949 |
| S.1 Frame 3-gang Anthracite Matt | 10 | 10139949 |
| S.1 Frame 4-gang Anthracite Matt | 2 | 10149949 |
| S.1 Frame 5-gang Anthracite Matt | 2 | 10159949 |



10118919

polar white, glossy

| Description | Pack qty. | Art No. |
|--|-----------|----------|
| S.1 Frame 1-gang P/White Gloss+Labelling | 10 | 10118919 |
| S.1 Frame 1-gang Polar White Glossy | 10 | 10118989 |
| S.1 Frame 2-gang P/White Gloss+Labelling | 10 | 10128919 |
| S.1 Frame 2-gang Polar White Glossy | 10 | 10128989 |
| S.1 Frame 3-gang P/White Gloss+Labelling | 10 | 10138919 |
| S.1 Frame 3-gang Polar White Glossy | 10 | 10138989 |
| S.1 Frame 4-gang Polar White Glossy | 2 | 10148989 |
| S.1 Frame 5-gang Polar White Glossy | 2 | 10158989 |
| S.1 Frame 2gangH P/White Gloss+Labelling | 10 | 10228919 |
| S.1 Frame 3gangH P/White Gloss+Labelling | 10 | 10238919 |
| S.1 Frame, Large Cut Out, P/White Glossy | 10 | 13098989 |



10119909

polar white, matt

| Description | Pack qty. | Art No. |
|--|-----------|----------|
| S.1 Frame 1-gang Polar White Matt | 10 | 10119909 |
| S.1 Frame 1-gang P/White Matt+Labelling | 10 | 10119919 |
| S.1 Frame 2-gang Polar White Matt | 10 | 10129909 |
| S.1 Frame 2-gang P/White Matt+Labelling | 10 | 10129919 |
| S.1 Frame 3-gang Polar White Matt | 10 | 10139909 |
| S.1 Frame 3-gang P/White Matt+Labelling | 10 | 10139919 |
| S.1 Frame 4-gang Polar White Matt | 10 | 10149909 |
| S.1 Frame 5-gang Polar White Matt | 2 | 10159909 |
| S.1 Frame 2gang H P/White Matt+Labelling | 10 | 10229919 |
| S.1 Frame 3gang H P/White Matt+Labelling | 10 | 10239919 |
| S.1 Frame, Large Cut Out, P/White Matt | 10 | 13099909 |



10118962

red, glossy

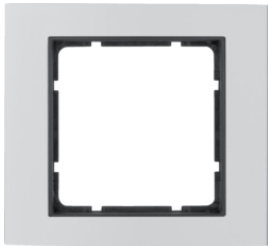
| Description | Pack qty. | Art No. |
|-----------------------------|-----------|----------|
| S.1 Frame 1-gang Red Glossy | 10 | 10118962 |
| S.1 Frame 2-gang Red Glossy | 2 | 10128962 |
| S.1 Frame 3-gang Red Glossy | 2 | 10138962 |
| S.1 Frame 4-gang Red Glossy | 2 | 10148962 |
| S.1 Frame 5-gang Red Glossy | 2 | 10158962 |

white, glossy

| Description | Pack qty. | Art No. |
|--|--------------|-----------------|
| S.1 Frame 1gang White Glossy + Labelling | 10 | 10118912 |
| S.1 Frame 1-gang White Glossy | 10 | 10118982 |
| S.1 Frame 2gang White Glossy + Labelling | 10 | 10128912 |
| S.1 Frame 2-gang White Glossy | 10 | 10128982 |
| S.1 Frame 3gang White Glossy + Labelling | 10 | 10138912 |
| S.1 Frame 3-gang White Glossy | 10 | 10138982 |
| S.1 Frame 4-gang White Glossy | 2 | 10148982 |
| S.1 Frame 5-gang White Glossy | 2 | 10158982 |
| S.1 Frame 2-gang H White Gloss+Labelling | 10 | 10228912 |
| S.1 Frame 3-gang H White Gloss+Labelling | 10 | 10238912 |
| S.1 Frame, Large Cut Out, White Glossy | 10 | 13098982 |



10118912



10113004

alu anodized / anthracite, matt

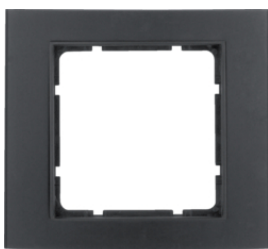
| Description | Pack qty. | Art No. |
|--|-----------|----------|
| B.3 Frame 1g Alum Anod/Anthracite Matt | 10 | 10113004 |
| B.3 Frame 2g Alum Anod/Anthracite Matt | 10 | 10123004 |
| B.3 Frame 3g Alum Anod/Anthracite Matt | 10 | 10133004 |
| B.3 Frame 4g Alum Anod/Anthracite Matt | 2 | 10143004 |
| B.3 Frame 5g Alum Anod/Anthracite Matt | 2 | 10153004 |
| Frame with large cut-out aluminium | 1 | 13093004 |



10113904

alu anodized / polar white, matt

| Description | Pack qty. | Art No. |
|---|-----------|----------|
| B.3 Frame 1g Alum Anod/Polar White Matt | 10 | 10113904 |
| B.3 Frame 2g Alum Anod/Polar White Matt | 10 | 10123904 |
| B.3 Frame 3g Alum Anod/Polar White Matt | 10 | 10133904 |
| B.3 Frame 4g Alum Anod/Polar White Matt | 2 | 10143904 |
| B.3 Frame 5g Alum Anod/Polar White Matt | 2 | 10153904 |
| Frame with large cut-ou B. alumi | 1 | 13093904 |



10113005

alu black / anthracite, matt

| Description | Pack qty. | Art No. |
|---|-----------|----------|
| B.3 Frame 1g Alum Black/Anthracite Matt | 10 | 10113005 |
| B.3 Frame 2g Alum Black/Anthracite Matt | 10 | 10123005 |
| B.3 Frame 3g Alum Black/Anthracite Matt | 10 | 10133005 |
| B.3 Frame 4g Alum Black/Anthracite Matt | 2 | 10143005 |
| RA 5F B.3 SCHW MATT ELOXIERT | 2 | 10153005 |
| B.3 Frame Large CO Alum Black/Athracite | 1 | 13093005 |



10113025

alu black / polar white, matt

| Description | Pack qty. | Art No. |
|--|-----------|----------|
| B.3 Frame 1g Alum Black/Polar White Matt | 10 | 10113025 |
| B.3 Frame 2g Alum Black/Polar White Matt | 10 | 10123025 |
| B.3 Frame 3g Alum Black/Polar White Matt | 10 | 10133025 |
| B.3 Frame 4g Alum Black/Polar White Matt | 2 | 10143025 |
| B.3 Frame 5g Alum Black/Polar White Matt | 2 | 10153025 |
| B.3 Frame LargeCO Alum Black/Polar White | 1 | 13093025 |



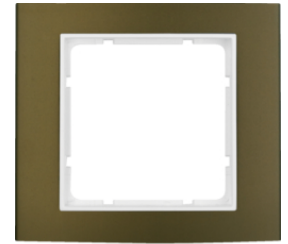
10113001

alu brown / anthracite, matt

| Description | Pack qty. | Art No. |
|---|-----------|----------|
| B.3 Frame 1g Alum Brown/Anthracite Matt | 10 | 10113001 |
| B.3 Frame 2g Alum Brown/Anthracite Matt | 10 | 10123001 |
| B.3 Frame 3g Alum Brown/Anthracite Matt | 10 | 10133001 |
| B.3 Frame 4g Alum Brown/Anthracite Matt | 2 | 10143001 |
| B.3 Frame 5g Alum Brown/Anthracite Matt | 2 | 10153001 |
| B.3 Frame Large CO Alum Brown/Athracite | 1 | 13093001 |

alu brown / polar white, matt

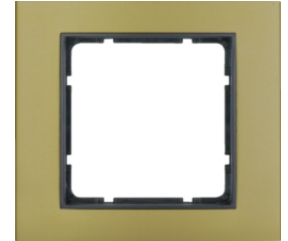
| Description | Pack qty. | Art No. |
|--|-----------|-----------------|
| B.3 Frame 1g Alum Brown/Polar White Matt | 10 | 10113021 |
| B.3 Frame 2g Alum Brown/Polar White Matt | 10 | 10123021 |
| B.3 Frame 3g Alum Brown/Polar White Matt | 10 | 10133021 |
| B.3 Frame 4g Alum Brown/Polar White Matt | 2 | 10143021 |
| B.3 Frame 5g Alum Brown/Polar White Matt | 2 | 10153021 |
| B.3 Frame LargeCO Alum Brown/Polar White | 1 | 13093021 |



10113021

alu gold / anthracite, matt

| Description | Pack qty. | Art No. |
|--|-----------|-----------------|
| B.3 Frame 1g Alum Gold/Anthracite Matt | 10 | 10113016 |
| B.3 Frame 2g Alum Gold/Anthracite Matt | 10 | 10123016 |
| B.3 Frame 3g Alum Gold/Anthracite Matt | 10 | 10133016 |
| B.3 Frame 4g Alum Gold/Anthracite Matt | 2 | 10143016 |
| B.3 Frame 5g Alum Gold/Anthracite Matt | 2 | 10153016 |
| B.3 Frame Large COAlum Gold/Athracite | 1 | 13093016 |



10113016

alu gold / polar white, matt

| Description | Pack qty. | Art No. |
|---|-----------|-----------------|
| B.3 Frame 1g Alum Gold/Polar White Matt | 10 | 10113046 |
| B.3 Frame 2g Alum Gold/Polar White Matt | 10 | 10123046 |
| B.3 Frame 3g Alum Gold/Polar White Matt | 10 | 10133046 |
| B.3 Frame 4g Alum Gold/Polar White Matt | 2 | 10143046 |
| B.3 Frame 5g Alum Gold/Polar White Matt | 2 | 10153046 |
| B.3 Frame Large COAlum Gold/Polar White | 1 | 13093046 |



10113046

alu red / anthracite, matt

| Description | Pack qty. | Art No. |
|---------------------------------------|-----------|-----------------|
| B.3 Frame 1g Alum Red/Anthracite Matt | 10 | 10113012 |
| B.3 Frame 2g Alum Red/Anthracite Matt | 10 | 10123012 |
| B.3 Frame 3g Alum Red/Anthracite Matt | 10 | 10133012 |
| B.3 Frame 4g Alum Red/Anthracite Matt | 2 | 10143012 |
| B.3 Frame 5g Alum Red/Anthracite Matt | 2 | 10153012 |
| B.3 Frame Large CO Alum Red/Athracite | 1 | 13093012 |



10113012

alu red / polar white, matt

| Description | Pack qty. | Art No. |
|---|-----------|-----------------|
| B.3 Frame 1g Alum Red/Polar White Matt | 10 | 10113022 |
| B.3 Frame 2g Alum Red/Polar White Matt | 10 | 10123022 |
| B.3 Frame 3g Alum Red/Polar White Matt | 10 | 10133022 |
| B.3 Frame 4g Alum Red/Polar White Matt | 2 | 10143022 |
| B.3 Frame 5g Alum Red/Polar White Matt | 2 | 10153022 |
| B.3 Frame Large CO Alum Red/Polar White | 1 | 13093022 |



10113022



10116904

alu anodized / anthracite, matt

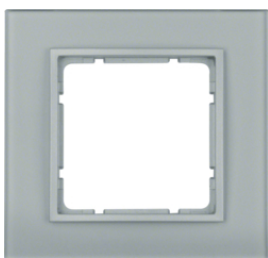
| Description | Pack qty. | Art No. |
|---|-----------|----------|
| B.7 Frame 1g, Alum Anodised/Anthracite | 10 | 10116904 |
| B.7 Frame 2g, Alum Anodised/Anthracite | 5 | 10126904 |
| B.7 Frame 3g, Alum Anodised/Anthracite | 5 | 10136904 |
| B.7 Frame 4g, Alum Anodised/Anthracite | 1 | 10146904 |
| B.7 Frame 5g, Alum Anodised/Anthracite | 1 | 10156904 |
| B.7 Frame Large CO Alum Anod/Anthracite | 2 | 13096904 |



10116914

alu anodized / polar white, matt

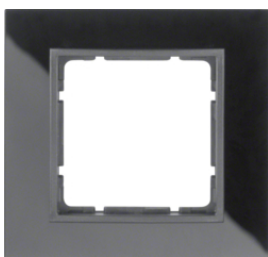
| Description | Pack qty. | Art No. |
|--|-----------|----------|
| B.7 Frame 1g, Alum Anodised/Polar White | 10 | 10116914 |
| B.7 Frame 2g, Alum Anodised/Polar White | 5 | 10126914 |
| B.7 Frame 3g, Alum Anodised/Polar White | 5 | 10136914 |
| B.7 Frame 4g, Alum Anodised/Polar White | 1 | 10146914 |
| B.7 Frame 5g, Alum Anodised/Polar White | 1 | 10156914 |
| B.7 Frame Large CO Alum Anod/Polar White | 2 | 13096914 |



10116414

glass alu lacquered / alu, matt

| Description | Pack qty. | Art No. |
|--|-----------|----------|
| B.7 Frame 1g Glass Alum Laquer/Alum Matt | 10 | 10116414 |
| B.7 Frame 2g Glass Alum Laquer/Alum Matt | 5 | 10126414 |
| B.7 frame 3g Glass Alum Laquer/Alum Matt | 5 | 10136414 |
| B.7 Frame 4g Glass Alum Laquer/Alum Matt | 1 | 10146414 |
| B.7 Frame 5g Glass Alum Laquer/Alum Matt | 1 | 10156414 |
| B.7 Frame Large CO Glass Alum Lacq/Alum | 2 | 13096414 |



10116616

glass black / anthracite, matt

| Description | Pack qty. | Art No. |
|--|-----------|----------|
| B.7 Frame 1g Glass Black/Anthracite Matt | 10 | 10116616 |
| B.7 Frame 2g Glass Black/Anthracite Matt | 5 | 10126616 |
| B.7 Frame 3g Glass Black/Anthracite Matt | 5 | 10136616 |
| B.7 Frame 4g Glass Black/Anthracite Matt | 1 | 10146616 |
| B.7 Frame 5g Glass Black/Anthracite Matt | 1 | 10156616 |
| B.7 Frame Large CO Glass Black/Anthracit | 2 | 13096616 |



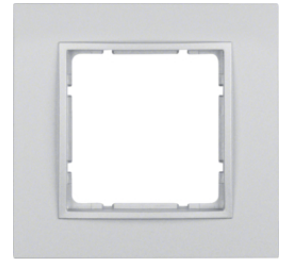
10116909

glass polar white / polar white, matt

| Description | Pack qty. | Art No. |
|--|-----------|----------|
| B.7 Frame 1g Glass Polar White/White | 10 | 10116909 |
| B.7 Frame 2g Glass Polar White/White | 5 | 10126909 |
| B.7 Frame 3g Glass Polar White/White | 5 | 10136909 |
| B.7 Frame 4g Glass Polar White/White | 1 | 10146909 |
| B.7 Frame 5g Glass Polar White/White | 1 | 10156909 |
| B.7 Frame Large CO Glass P-White/P-White | 2 | 13096909 |

plastic alu, matt lacquered

| Description | Pack qty. | Art No. |
|---|-----------|-----------------|
| B.7 Frame 1g, Aluminium Matt Lacquered | 10 | 10116424 |
| B.7 Frame 2g, Aluminium Matt Lacquered | 10 | 10126424 |
| B.7 Frame 3g, Aluminium Matt Lacquered | 5 | 10136424 |
| B.7 Frame 4g, Aluminium Matt Lacquered | 1 | 10146424 |
| B.7 Frame 5g, Aluminium Matt Lacquered | 1 | 10156424 |
| B.7 Frame Large CO Aluminium, Lacquered | 2 | 13096424 |



10116424

plastic anthracite, matt

| Description | Pack qty. | Art No. |
|--|-----------|-----------------|
| B.7 Frame 1-gang, Anthracite Matt | 10 | 10116626 |
| B.7 Frame 2-gang, Anthracite Matt | 10 | 10126626 |
| B.7 Frame 3-gang, Anthracite Matt | 5 | 10136626 |
| B.7 Frame 4-gang, Anthracite Matt | 1 | 10146626 |
| B.7 Frame 5-gang, Anthracite Matt | 1 | 10156626 |
| B.7 Frame Large CO Anthracite, Lacquered | 2 | 13096626 |



10116626

plastic polar white, matt

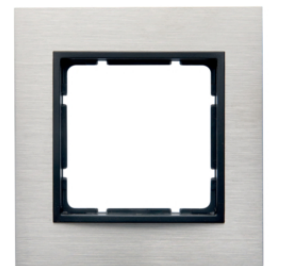
| Description | Pack qty. | Art No. |
|--|-----------|-----------------|
| B.7 Frame 1-gang, Polar White Matt | 10 | 10116919 |
| B.7 Frame 2-gang, Polar White Matt | 10 | 10126919 |
| B.7 Frame 3-gang, Polar White Matt | 5 | 10136919 |
| B.7 Frame 4-gang, Polar White Matt | 1 | 10146919 |
| B.7 Frame 5-gang, Polar White Matt | 1 | 10156919 |
| B.7 Frame Large CO P/White Matt, Lacquer | 2 | 13096919 |



10116919

stainless steel / anthracite, matt

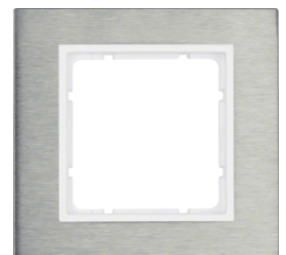
| Description | Pack qty. | Art No. |
|--|-----------|-----------------|
| Frame 1gang - B.7 stainless steel | 1 | 10113406 |
| B.7 Frame 1g Brush S/Steel/Anthracite | 10 | 10113606 |
| B.7 Frame 2g Brush S/Steel/Anthracite | 5 | 10123606 |
| B.7 Frame 3g Brush S/Steel/Anthracite | 5 | 10133606 |
| B.7 Frame 4g Brush S/Steel/Anthracite | 1 | 10143606 |
| B.7 Frame 5g Brush S/Steel/Anthracite | 1 | 10153606 |
| B.7 Frame 2gH Brush S/Steel/Anthracite | 5 | 10223606 |
| FRAME 3GANG B.1 PW/ANTHRA | 1 | 10233406 |
| B.7 Frame 3gH Brush S/Steel/Anthracite | 5 | 10233606 |
| B.7 Frame 4gH Brush S/Steel/Anthracite | 1 | 10243606 |
| B.7 Frame 5gH Brush S/Steel/Anthracite | 1 | 10253606 |
| B.7 Frame Large CO S/Steel/Anthracite | 2 | 13093606 |



10113406

stainless steel / polar white, matt

| Description | Pack qty. | Art No. |
|---|-----------|-----------------|
| B.7 Frame 1g Brush S/Steel/Polar White | 10 | 10113609 |
| B.7 Frame 2g Brush S/Steel/Polar White | 5 | 10123609 |
| B.7 Frame 3g Brush S/Steel/Polar White | 5 | 10133609 |
| B.7 Frame 4g Brush S/Steel/Polar White | 1 | 10143609 |
| B.7 Frame 5g Brush S/Steel/Polar White | 1 | 10153609 |
| B.7 Frame 2gH Brush S/Steel/Polar White | 5 | 10223609 |
| B.7 Frame 3gH Brush S/Steel/Polar White | 5 | 10233609 |
| B.7 Frame 4gH Brush S/Steel/Polar White | 1 | 10243609 |
| B.7 Frame 5gH Brush S/Steel/Polar White | 1 | 10253609 |
| B.7 Frame Large CO S/Steel/Polar White | 2 | 13093609 |



10113609



10411606

Berker B.3 mounting box

| Description | Pack qty. | Art No. |
|--|-----------|----------|
| B.3 Surface Mount Box Anthracite 1-gang | 10 | 10411606 |
| B.3 Surface Mount Box Polar White 1-gang | 10 | 10411909 |
| B.3 Surface Mount Box Anthracite 2-gang | 5 | 10421606 |
| B.3 Surface Mount Box Polar White 2-gang | 5 | 10421909 |
| B.3 Surface Mount Box Anthracite 3-gang | 5 | 10431606 |
| B.3 Surface Mount Box Polar White 3-gang | 5 | 10431909 |



10418982

Berker S.1 mounting box

| Description | Pack qty. | Art No. |
|---|-----------|----------|
| S.1 Surface Box 1-gang White Glossy | 10 | 10418982 |
| S.1 Surface Box 1-gang P/White Glossy | 10 | 10418989 |
| S.1 Surface Box 1-gang Polar White Matt | 10 | 10419909 |
| S.1 Surface Box 1-gang Aluminium Matt | 10 | 10419939 |
| S.1 Surface Box 1-gang Anthracite Matt | 10 | 10419949 |
| S.1 Surface Box 2-gang White Glossy | 5 | 10428982 |
| S.1 Surface Box 2-gang P/White Glossy | 5 | 10428989 |
| S.1 Surface Box 2-gang Polar White Matt | 5 | 10429909 |
| S.1 Surface Box 2-gang Aluminium Matt | 5 | 10429939 |
| S.1 Surface Box 2-gang Anthracite Matt | 5 | 10429949 |
| S.1 Surface Box 3-gang White Glossy | 5 | 10438982 |
| S.1 Surface Box 3-gang P/White Glossy | 5 | 10438989 |
| S.1 Surface Box 3-gang Polar White Matt | 5 | 10439909 |
| S.1 Surface Box 3-gang Aluminium Matt | 5 | 10439939 |
| S.1 Surface Box 3-gang Anthracite Matt | 5 | 10439949 |



10071404

Surface-mounted housing

| Description | Pack qty. | Art No. |
|---|-----------|----------|
| BUILD-ON HOUSING B1 ALU | 1 | 10071404 |
| Surface-mounted housing 1g flat - B ant | 1 | 10071606 |
| Surface-mounted housing 1g flat -S/B PW | 1 | 10071909 |
| BUILT-ON HOUS.FLAT 1GANG | 1 | 10079909 |