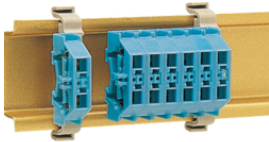


# Mini-junction terminals

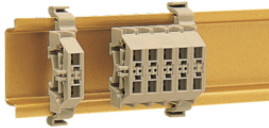




## Blue color

Description	Pack qty.	Art No.
Mini DIN rail terminal 2,5mm <sup>2</sup> , blue	50	<b>K89000</b>

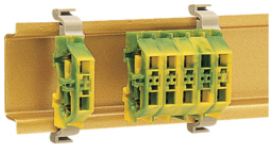
K890



## Grey color

Description	Pack qty.	Art No.
Mini DIN rail terminal 2,5mm <sup>2</sup> , gray	50	<b>K89100</b>

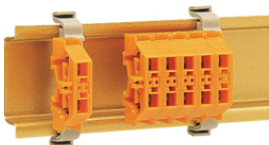
K891



## Green color

Description	Pack qty.	Art No.
Mini DIN rail terminal 2,5mm <sup>2</sup> , green	50	<b>K89200</b>

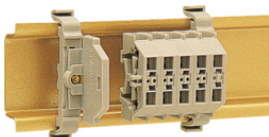
K892



## Orange color

Description	Pack qty.	Art No.
Mini DIN rail terminal 2,5mm <sup>2</sup> , orange	50	<b>K89300</b>

K893



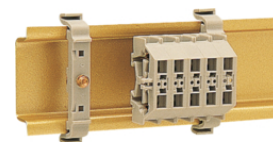
## End plates

Description	Pack qty.	Art No.
End plate for Mini DIN rail terminals	50	<b>K89400</b>

K894

**Adaptor for symmetrical DIN rail**

Description	Pack qty.	Art No.
Mounting base for Mini DIN rail terminal	25	<b>K89500</b>



K895