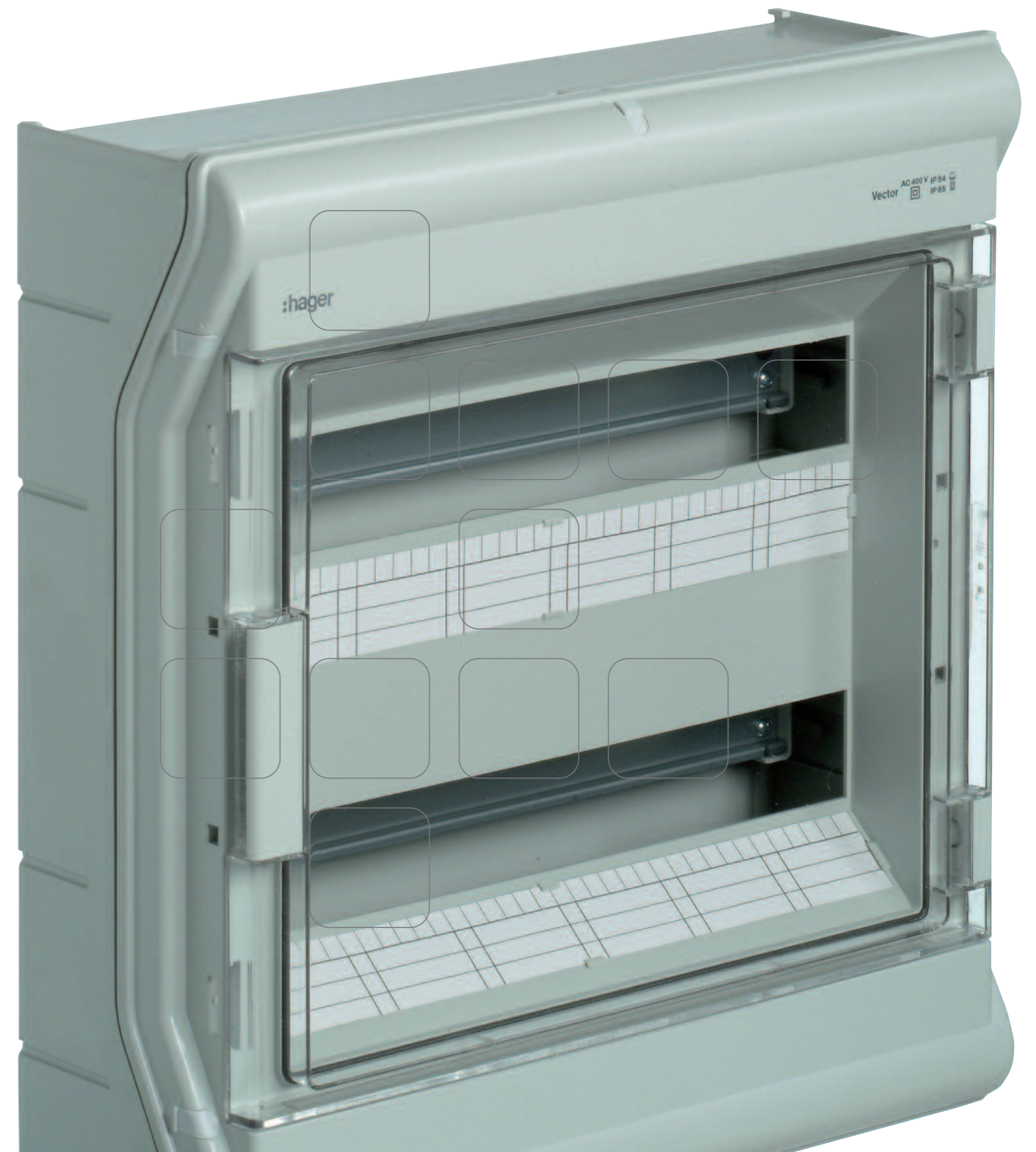
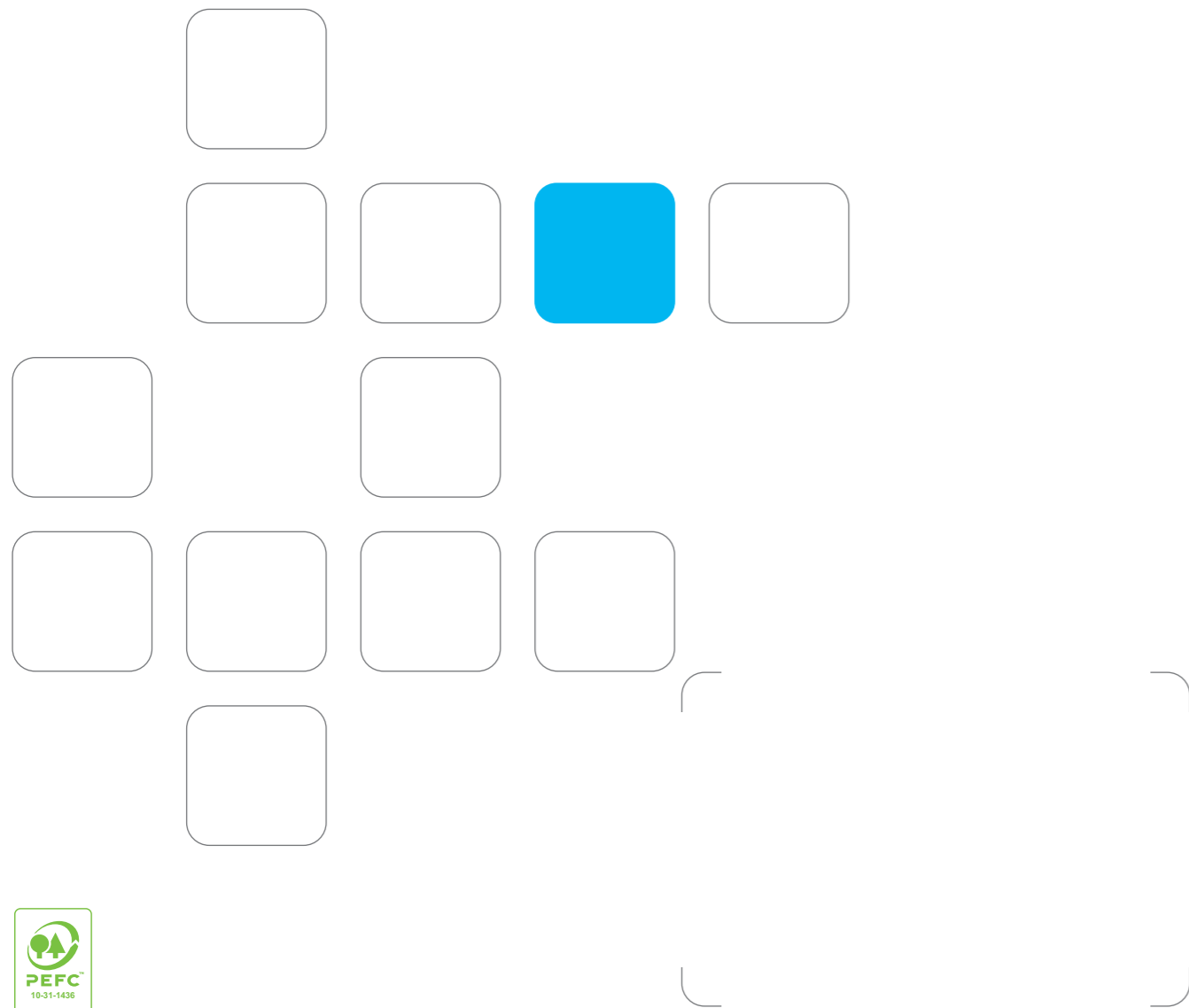


vector enclosure for outdoor use
long lasting protection in aggressive environments



The vector range for outdoor use

The outdoor vector range has been developed to maintain over a long period of time the mechanical properties of the material used in their manufacture and make it possible to install them in most locations. Designed to resist to bad weather, humidity, dust, chemical aggressions and ultraviolet radiation exposure.



Your benefits

- Space from 2 to 54 modules
- Ease of installation :
 - DIN rail adjustable in depth
 - Accessories for installing enclosure in specific outdoor locations like for example masts
- The characteristics and aspects of the material remain unchanged over the years and perfectly resist to chemical attacks and ultra violet exposure
- Accessories to guarantee optimal IP65 protection grade

Technical characteristics

- Enclosure made of high grade insulating material , self-extinguishing, class II.
IP65 VE103-110, IK07 / VE112 – 318, IK08
- Glow wire test 850°C acc. IEC 695.2.1
- Material : polycarbonate, excellent resistance to a large variety of chemical substances (saline, acid, hydrocarbons, alcohols...) and ultraviolet radiation.
- Compliant with the REACH and RoHS recommendations.
- Compliance to EN60439-3 standard – CE certificate
- AC / DC applications

Expert tips

- 

Enclosures for outdoor applications
Resistance to ultraviolet radiation, immersion in water in accordance with UL746C.
- 

Excellent behavior in tough environments
Usage in a wide scope of temperatures. Dimensional stability up to 100°C. Resistance to frost up to -25°C (IK07 acc. to EN 60439 below -5°C).
- 

No condensation inside the enclosure
Special ventilated cable glands to drain water from condensation. Guarantees an IP65 protection grade.
- 

Quick and easy installation in difficult places
Fixing brackets for wall mounting and plates for fitting on masts for example in photovoltaic installations.
- 

Covered height adjustments
Provided in each enclosure to protect the fixing screws. Adjustable in depth to correct the irregularities on a wall (up to 3mm).
- 

Adjustable DIN rails
To fit products of different depth, provided with quick fixing chassis.
- 

Gone through rigorous test
Glow wire test, temperature test at -25°C, IK impact test, dust proof, "Yellow card" ultraviolet radiation resistance, chemical resistance...
Product environment profile
- 

Compliance to environmental recommendations REACH and RoHS
No use of substances listed as hazardous by the ECHA (European Chemical Agency)

