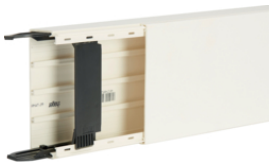




LFF4009009010

40 x 90, 2 coupling pieces, 4 cable retainer

| Description | Pack qty. | Art No. |
|--|-----------|---------------|
| Liféa trunking40x90, c, 2 cable r., pw | 24 | LFF4009009010 |
| Liféa trunking40x90, c, 2 cable r., g | 24 | LFF4009007030 |
| Divider H: 40 mm | 50 | M2024 |
| Adjus inter corner LFF40090 pure white | 1 | LFF400949010 |
| Adjus exter corner LFF40090 pure white | 1 | LFF400939010 |
| Flat corner LFF40090 pure white | 1 | LFF400959010 |
| End cap for LFF60090 and LFF40090 pw | 1 | LFF600969010 |
| Joint cover lid LF/LFF width 90, pw | 1 | LFF600979010 |
| Drag cut conceals height LF/LFF 30/40/60 | 1 | LFF60J9010 |
| T and X piece, LF 40090/91, pure white | 1 | M54569010 |
| Cable retainer LF/LFP, width 90mm | 10 | M7248 |
| Frame for vertical mounting 45x45 | 1 | L4770 |
| 1 gang 45x45 support LFF40/60090 pw | 1 | LFF71H0909010 |
| 10 Extensions for sup.LFF71H090 pw | 1 | LFF71H0999010 |
| 1 gang insulation box for LFF71H/N/S | 10 | LFF79H |
| 60 mm support for LFF40/60090 pw | 1 | LFF71U0909010 |
| 1 gang insulation box for LFF71U | 10 | LFF79U |



LFF4011009010

40 x 110, 2 coupling pieces, 4 cable retainer

| Description | Pack qty. | Art No. |
|--|-----------|---------------|
| Liféa trunking40x110, c, 2cable r., pw | 20 | LFF4011009010 |
| Liféa trunking40x110, c, 2cable r., g | 20 | LFF4011007030 |
| Divider H: 40 mm | 50 | M2024 |
| Adjus inter corner LFF40110 pure white | 1 | LFF401149010 |
| Adjus exter corner LFF40110 pure white | 1 | LFF401139010 |
| Flat corner LFF40110 pure white | 1 | LFF401159010 |
| End cap for LFF60110 and LFF40110 pw | 1 | LFF601169010 |
| Joint cover lid LF/LFF width 110, pw | 1 | LFF601179010 |
| Drag cut conceals height LF/LFF 30/40/60 | 1 | LFF60J9010 |
| T and X piece, LF 40110, pure white | 1 | M54169010 |
| T and X piece, LF 40110, grey | 1 | M54167030 |
| Cable retainer LF/LFP, width 110mm | 10 | M7249 |
| Frame for vertical mounting 45x45 | 1 | L4770 |
| 1 gang 45x45 support LFF40/60110 pw | 1 | LFF71H1109010 |
| 10 Extensions for sup.LFF71H110 pw | 1 | LFF71H1199010 |
| 1 gang insulation box for LFF71H/N/S | 10 | LFF79H |
| 60 mm support for LFF40/60110 pw | 1 | LFF71U1109010 |
| 1 gang insulation box for LFF71U | 10 | LFF79U |



LFF60090

60 x 90, 2 coupling pieces, 4 cable retainer

| Description | Pack qty. | Art No. |
|--|-----------|---------------|
| Liféa trunking 60x90, c, 2 cable r., pw | 16 | LFF6009009010 |
| Liféa trunking 60x90, c, 2 cable r., g | 16 | LFF6009007030 |
| partition LF H60 | 50 | M2026 |
| Adjus inter corner LFF60090 pure white | 1 | LFF600949010 |
| Adjus exter corner LFF60090 pure white | 1 | LFF600939010 |
| Flat corner LFF60090 pure white | 1 | LFF600959010 |
| End cap for LFF60090 and LFF40090 pw | 1 | LFF600969010 |
| Joint cover lid LF/LFF width 90, pw | 1 | LFF600979010 |
| Drag cut conceals height LF/LFF 30/40/60 | 1 | LFF60J9010 |
| T-piece halogen free LFxx 60x90mm pw | 1 | M54669010 |
| Cable retainer LF/LFP, width 90mm | 10 | M7248 |
| Frame for vertical mounting 45x45 | 1 | L4770 |
| 1 gang 45x45 support LFF40/60090 pw | 1 | LFF71H0909010 |
| 10 Extensions for sup.LFF71H090 pw | 1 | LFF71H0999010 |
| 1 gang insulation box for LFF71H/N/S | 10 | LFF79H |
| 60 mm support for LFF40/60090 pw | 1 | LFF71U0909010 |
| 1 gang insulation box for LFF71U | 10 | LFF79U |

60 x 110, 2 coupling pieces, 4 cable retainer

| Description | Pack qty. | Art No. |
|--|-----------|----------------------|
| Liféa trunking 60x110, c, 2 cable r., pw | 16 | LFF6011009010 |
| Liféa trunking 60x110, c, 2 cable r., g | 16 | LFF6011007030 |
| partition LF H60 | 50 | M2026 |
| Adjus inter corner LFF60110 pure white | 1 | LFF601149010 |
| Adjus exter corner LFF60110 pure white | 1 | LFF601139010 |
| Flat corner LFF60110 pure white | 1 | LFF601159010 |
| End cap for LFF60110 and LFF40110 pw | 1 | LFF601169010 |
| Joint cover lid LF/LFF width 110, pw | 1 | LFF601179010 |
| Drag cut conceals height LF/LFF 30/40/60 | 1 | LFF60J9010 |
| T-piece hal free LFxxx/FB 60x110mm pw | 1 | M55069010 |
| Cable retainer LF/LFP, width 110mm | 10 | M7249 |
| Frame for vertical mounting 45x45 | 1 | L4770 |
| 1 gang 45x45 support LFF40/60110 pw | 1 | LFF71H1109010 |
| 10 Extensions for sup.LFF71H110 pw | 1 | LFF71H1199010 |
| 1 gang insulation box for LFF71H/N/S | 10 | LFF79H |
| 60 mm support for LFF40/60110 pw | 1 | LFF71U1109010 |
| 1 gang insulation box for LFF71U | 10 | LFF79U |



LFF6011009010