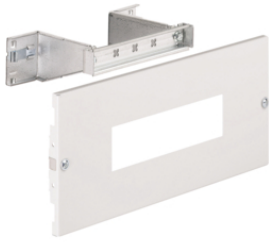


quadro distribution system

	Page
quadro4 - quadro5 - quadro+, equipment kits for modular devices	3
quadro4 - quadro5 - quadro+, busbars	5
quadro4 - quadro5 - quadro+, side & staged busbars	7
quadro4 - quadro5 - quadro+, copper bars	8
quadro4 - quadro6 - quadro+, connections	9
Single pole distribution blocks, multi-plug 4P repartitors	10
quadro4 - quadro5 - quadro+, accessories for wiring	11
quadro4 - quadro5 - quadro+, connection accessories	13



UC200

Equipment kits for modular devices

Description	Pack qty.	Art No.
MCB kit, quadro.system, 150x350 mm	2	UC200
MCB kit, quadro.system, 150x600 mm 24M	2	UC201
MCB kit, quadro.system, 200x600 mm	2	UC205
MCB kit, quadro.system, 150x800 mm	2	UC203
MCB kit, quadro.system, 200x800 mm	2	UC207
Moun. pl. fr. plate quadro 200x600 mm	2	UC233
Moun. pl. fr. plate quadro.s. 300x600 mm	2	UC234
Moun. pl. fr. plate quadro 200x800 mm	2	UC243



UC209

Equipment kits for terminals

Description	Pack qty.	Art No.
MCB kit, quadro.system, 150x600 mm	2	UC209



UC221

Plain front plates

Description	Pack qty.	Art No.
Moun. pl. fr. plate quadro.sy. 50x350 mm	2	UC221
Moun. pl. fr. plate quadro.sy. 75x350 mm	2	UC220
Moun. pl. fr. plate quadro 150x350 mm	2	UC222
Moun. pl. fr. plate quadro 200x350 mm	2	UC223
Moun. pl. fr. plate quadro 300x350 mm	2	UC224
Moun. pl. fr. plate quadro 400x350 mm	2	UC225
Moun. pl. fr. plate quadro 600x350 mm	2	UC226
Moun. pl. fr. plate quadro 800x350 mm	2	UC227



UC951

Settable DIN rail

Description	Pack qty.	Art No.
Adjust. DIN rail quadro.system W500 mm	2	UC951



UC962

Perforated mounting plates

Description	Pack qty.	Art No.
Perf. dished plate quadro.sy. 300x500 mm	1	UC960
Perf. dished plate quadro.sy. 450x500 mm	1	UC962
Perf. dished plate quadro.sy. 600x500 mm	1	UC964

Clips nuts and M5 screws

Description	Pack qty.	Art No.
Clips nut and screws, quadro, M5	25	UC969



UC969

Hinges for front plates

Description	Pack qty.	Art No.
Hinge, quadro, 2 pieces	10	UC268



UC268

Rail DIN raiser 30 mm

Description	Pack qty.	Art No.
Rail DIN raiser (x160-x250)	1	HYA036H



HYA036H



4 pole support

Description	Pack qty.	Art No.
Busbar support quadro 250-630 A	1	UC820

UC820



Crossbar back & vertical mounting

Description	Pack qty.	Art No.
Bracket quadro.system 160-630 A W500 mm	1	UC812

UC812



Crossbar bottom mounting

Description	Pack qty.	Art No.
Bracket quadro.system 160-630 A W250 mm	1	UC811

UC811



Protection shield

Description	Pack qty.	Art No.
Prot. shield quadro 160/630A 1000x294 mm	1	UC827

UC827



Inclined busbars to compose from 250 A to 630 A

Description	Pack qty.	Art No.
Angle busbar supp. quadro 400/630 A 4P	1	UC826
Prot. shield quadro 160/630A 1000x212 mm	1	UC828

UC826

Busbars to compose from 500 A to 1600 A

Description	Pack qty.	Art No.
Support quadro.sys. 3P 630-1600A	1	UC823
Busbars support 4P 630-1600A 1 or 2 bars	1	UC824
Bracket quadro.system 400-1600A	25	UC821



UC823

Mounting supports

Description	Pack qty.	Art No.
Support quadro.sys. 3P 630-1600A	1	UC822
Busbars bearing 4P 630-1600A 1 or 2 bars	1	UC825



UC822



UC830

Side busbars quadro 250 A to compose

Description	Pack qty.	Art No.
Lat. busbar support quadro.sy. 250 A	6	UC830
Protec. shield quadro.sy. W1000 mm	1	UC834



UC815

Staged busbars in 250 and 400 A to compose

Description	Pack qty.	Art No.
Multi stage usbars support 160/250/400 A	1	UC815
Universal bracket, Quadro5, W185 mm	2	UC288
Universal bracket, quadro.system, L250mm	2	UC988
PROTECTION SHEILD L620 mm	1	UC816

Copper bars

Description	Pack qty.	Art No.
Copper rail, univers, 12x5x245mm	10	KS72B
Copper rail, univers, 12x5x1000mm	10	KS72C
Copper rail quadro 20x5 L1000 mm	4	UC832
Perf. copper rail quadro 25x5 L1750mm	2	UT87E
Copper rail quadro 32x5 L1000 mm	4	UC842
Copper rail quadro 32x5 L1750 mm	4	UC843
Busbar, universN, 30x10x430mm	1	UM30A4
Busbar, universN, 30x5x280mm	1	UM30A3
Busbar, universN, 30x5x430mm	1	UM30A1
Busbar, universN, 30x5x880mm	1	UM30A2
Copper rail quadro 50x5 L1750 mm	2	UC844
Copper rail quadro 63x5 L1750 mm	2	UC922
Copper rail quadro 80x5 L1750 mm	2	UC966
Copper rail quadro 100x5 L1750 mm	2	UC967
Copper rail quadro 125x5 L1750 mm	2	UC968
Copper rail quadro 50x10 L1750 mm	2	UC844E
Copper rail quadro 60x10 L1750 mm	2	UC922E
Copper rail quadro 80x10 L1750 mm	2	UC966E
Copper rail quadro 100x10 L1750mm	2	UC967E
Copper rail quadro 20x10 L1750 mm	2	UC968E



KS72B

Screws

Description	Pack qty.	Art No.
Screws & washers quadro M6x12 mm	50	UC851
Conn. screw & washer quadro.sy. M8x30 mm	100	UC853
Screws & washers quadro.sy. M10x30 mm	100	UC855
Screws self-thread quadro.sy. M6x10 mm	1	UC856E



UC851



UC877

Connectors

Description	Pack qty.	Art No.
Connection cable, quadro, BM 160A	1	UC877
Connection cable, quadro.system, 400 A	1	UC868
Cableset, quadro, HA250 A	1	UC875

Single pole distribution blocks

Description	Pack qty.	Art No.
Distribution block, 125A, 1pole	4	KJ02D
Distribution block, 160A, 1pole	4	KJ02C
Distribution block, 250A, 1pole	4	KJ02A
Distribution block 400A, closed, 1pole	4	KJ02B



KJ02D

Multi-plug repartitors

Description	Pack qty.	Art No.
Distribution bar 250A, 4pole	1	KJ03A
Distribution bar 250A, 4pole + Connectors	1	KJ03B



KJ03A

Connector end piece

Description	Pack qty.	Art No.
Crimp connector 4 ² -10mm ²	12	KZ007



KZ007

Connectors

Description	Pack qty.	Art No.
Connecting cable, 120mm, blue, 6mm ²	12	KZ001
Connecting cable, 500mm, blue, 6mm ²	12	KZ051
Connecting cable, 120mm, blue, 10mm ²	12	KZ004
Connecting cable, 500mm, blue, 10mm ²	12	KZ074
Connecting cable, 120mm, black, 6mm ²	12	KZ002
Connecting cable, 500mm, black, 6mm ²	12	KZ052
Connecting cable, 120mm, black, 10mm ²	12	KZ005
Connecting cable, 500mm, black, 10mm ²	12	KZ075



KZ001



Horizontal wiring trunk

Description	Pack qty.	Art No.
trunking, 30x8, L250mm	10	UC911
Hor. trunking quadro.sy. 429x80x30 mm	10	UC912

UC911



Fixing support

Description	Pack qty.	Art No.
Carrier strap, quadro.system, trunking	6	UC915

UC915



Cable guides

Description	Pack qty.	Art No.
Transmission clamp, universN, 20 pcs.	1	UZ25V1
Transmission clamp, universN, 20 pcs.	1	UZ25V2

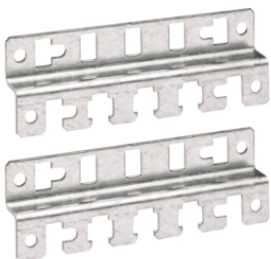
UZ25V1



Support for cable guide

Description	Pack qty.	Art No.
Adaptor, universN, double, 20pcs	1	UZ01V1

UZ01V1



Universal crossbars

Description	Pack qty.	Art No.
Universal bracket, Quadro5, W185 mm	2	UC288
Universal bracket, quadro.system, L250mm	2	UC988
Universal bracket, Quadro5, W500 mm	2	UC289

UC288

Blanking strip



Description	Pack qty.	Art No.
Cover strip, universal, 24M, metal sheet	10	JP024

JP024

Marking strip



Description	Pack qty.	Art No.
Identification strip, universN, 10 Module	12	JE001

JE001

Horizontal separators

Description	Pack qty.	Art No.
Horiz. partit. panel, Quadro4, L620 mm	1	FC664

Cable spreader boxes

Description	Pack qty.	Art No.
cable cover, 1-section, wall fixation	1	FZ441
cable cover, 2-section, wall fixation	1	FZ442
cable cover, 3-section, wall fixation	1	FZ443
cable cover, 4-section, wall fixation	1	FZ444



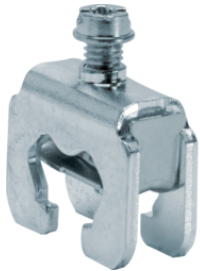
FZ441



Incoming earth terminal blocks

Description	Pack qty.	Art No.
Earth cross rail quadro.sys. 12x5 L250 mm	1	UC971
Earth cross rail quadro.sys. 12x5 L500 mm	1	UC972

UC971



Staples

Description	Pack qty.	Art No.
Busbar terminal 1,5mm ² - 16mm ² , for 12x5mm	20	K070
Busbar terminal 2,5mm ² - 35mm ² , for 12x5mm	20	K071
Busbar terminal 25mm ² -70mm ² , for 12x5/10mm	15	K073
Busbar terminal 16mm ² - 70mm ² , for 12x10mm	10	K074

K070



Outgoing connectors

Description	Pack qty.	Art No.
Earth rail & brace quadro.sys. L250 mm	1	UC975
Earth rail & brace quadro.sys. L500 mm	1	UC976

UC975



QuickConnect outgoing connectors

Description	Pack qty.	Art No.
Earth rail & brace kit quadro L250 mm	1	UC975S
Earth rail & brace kit quadro L500 mm	1	UC976S

UC975S



Spacer

Description	Pack qty.	Art No.
Spacer, quadro, M6 L80 mm	5	UC992

UC992

Symmetrical rail

Description	Pack qty.	Art No.
SYMMETRICAL DIN RAIL 2M	20	A08800
SYMMETRICAL DIN RAIL 10MM 2M	20	A09800
SYMMETRICAL DIN RAIL 15MM 2M	10	A09900



A09900

Perforated symmetrical rails

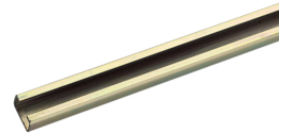
Description	Pack qty.	Art No.
Perforated rail DIN, Venezia, 15x2000 mm	10	A099E
Perforated DIN-rail, Venezia, 15x2000 mm	10	A099B



A099E

DIN rail

Description	Pack qty.	Art No.
Profile rail, Venezia, 15x2000 mm	10	A099C



A099C

Special screws

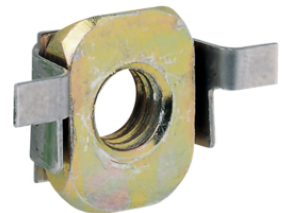
Description	Pack qty.	Art No.
Nut for profile rail DIN, Venezia, M6	25	A099D



A099D

M6 cage nuts

Description	Pack qty.	Art No.
Nut, quadro, M5	25	UC990



UC990

**M6 x 12 screws**

Description	Pack qty.	Art No.
Screw, quadro, M6x12 mm	25	UC991

UC991

Steel sheet monobloc enclosures

Description	Pack qty.	Art No.
Automation desk Venezia 600x1000x400 mm	1	FL650CD
Automation desk Venezia 800x1000x400 mm	1	FL652CD
Automation desk, Venezia, 1000x1000x400	1	FL654CD
Automation desk Venezia 1200x1000x400 mm	1	FL656CD