

# Load break switches

	<b>Page</b>
Load break switches visual breaking 20 to 125A	3
Load break switches visual breaking 125 to 1600A	5
Load break switches visual breaking 100 to 400A	7



HAB302

## Load break switches visual breaking 3 pole

Description	Pack qty.	Art No.
Load break switch 3P 20A	1	<b>HAB302</b>
Load break switch 3P 32A	1	<b>HAB303</b>
Load break switch 3P 40A	1	<b>HAB304</b>
Load break switch 3P 63A	1	<b>HAB306</b>
Load break switch 3P 63A	1	<b>HAC306</b>
Load break switch 3P 80A	1	<b>HAC308</b>
Load break switch 3P 100A	1	<b>HAC310</b>
Load break switch 3P 100A	1	<b>HAD310</b>
Load break switch 3P 125A	1	<b>HAD312</b>



HAB402

## Load break switches visual breaking 4 pole

Description	Pack qty.	Art No.
Load break switch 4P 20A	1	<b>HAB402</b>
Load break switch 4P 32A	1	<b>HAB403</b>
Load break switch 4P 40A	1	<b>HAB404</b>
Load break switch 4P 63A	1	<b>HAB406</b>
Load break switch 4P 63A	1	<b>HAC406</b>
Load break switch 4P 80A	1	<b>HAC408</b>
Load break switch 4P 100A	1	<b>HAC410</b>
Load break switch 4P 100A	1	<b>HAD410</b>
Load break switch 4P 125A	1	<b>HAD412</b>



HZC010

## Detachable handle

Description	Pack qty.	Art No.
Grey handle LBS 20-100A	1	<b>HZC010</b>
Grey handle LBS 100-125A	1	<b>HZC011</b>



HZC111

## Shaft extensions

Description	Pack qty.	Art No.
Shaft extension N°5 150mm LBS 20-125A	1	<b>HZC111</b>
Shaft extension N°5 200mm LBS 20-125A	1	<b>HZC112</b>
Shaft extension N°5 320mm LBS 20-125A	1	<b>HZC113</b>



HZC211

## Terminal shrouds

Description	Pack qty.	Art No.
Terminal shrouds 3P LBS 20-63A	1	<b>HZC211</b>
Terminal shrouds 3P LBS 63-100A	1	<b>HZC213</b>
Terminal shrouds 3P LBS 100A-125A	1	<b>HZC215</b>
Terminal shrouds 4P LBS 20-63A	1	<b>HZC212</b>
Terminal shrouds 4P LBS 63-100A	1	<b>HZC214</b>
Terminal shrouds 4P LBS 100A-125A	1	<b>HZC216</b>

**Auxiliary contact**

Description	Pack qty.	Art No.
Auxiliary contact 1C+10 LBS 20-160A	1	<b>HZC311</b>
Auxiliary contact 2C LBS 20-160A	1	<b>HZC312</b>



HZC311



HA351

## Load break switches visual breaking 3 pole

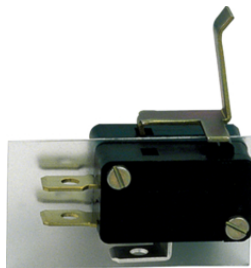
Description	Pack qty.	Art No.
Load break switch 3P 125A	1	<b>HA351</b>
Load break switch 3P 160A	1	<b>HA352</b>
Load break switch 3P 250A	1	<b>HA354</b>
Load break switch 3P 400A	1	<b>HA357</b>
Load break switch 3P 630A	1	<b>HA358</b>
Load break switch 3P 800A	1	<b>HA360</b>
Load break switch 3P 1250A	1	<b>HA362</b>
Load break switch 3P 1600A	1	<b>HA364</b>



HA451

## Load break switches visual breaking 4 pole

Description	Pack qty.	Art No.
Load break switch 4P 125A	1	<b>HA451</b>
Load break switch 4P 160A	1	<b>HA452</b>
Load break switch 4P 250A	1	<b>HA454</b>
Load break switch 4P 400A	1	<b>HA457</b>
Load break switch 4P 630A	1	<b>HA458</b>
Load break switch 4P 800A	1	<b>HA460</b>
Load break switch 4P 1250A	1	<b>HA462</b>
Load break switch 4P 1600A	1	<b>HA464</b>



HZ023

## Auxiliary contact

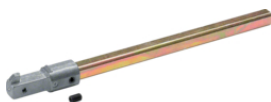
Description	Pack qty.	Art No.
Auxiliary contact 2x 1C+O for 125/3200A	1	<b>HZ023</b>



HZC002

## Detachable handle

Description	Pack qty.	Art No.
Black handle FCS- LBS 100-630A	1	<b>HZC002</b>



HZC101

## Shaft extensions

Description	Pack qty.	Art No.
Shaft extension 200 mm FCS-LBS 63-630A	1	<b>HZC101</b>
Shaft extension 320 mm FCS-LBS 63-630A	1	<b>HZC102</b>
Shaft extension 200 mm FCS-LBS 800-1800A	1	<b>HZC105</b>
Shaft extension 320 mm FCS-LBS 800-1800A	1	<b>HZC106</b>

## Terminal shields

Description	Pack qty.	Art No.
Terminal shield h125/160 3P	1	<b>HZ033</b>
Terminal shield h250 3P	1	<b>HZ034</b>
Terminal shield h400/630 3P	1	<b>HZ035</b>
Terminal shield for HA360	1	<b>HZ036</b>
Terminal shield for HA362, HA364, HA368	1	<b>HZ037</b>
Terminal shield h125/160 4P	1	<b>HZ043</b>
Terminal shield HA250/400A 4P	1	<b>HZ044</b>
Terminal shield HA456/HA458 4P	1	<b>HZ045</b>
Terminal shield for HA460	1	<b>HZ046</b>
Terminal shield for HA462, HA464, HA468	1	<b>HZ047</b>



HZ033

## Terminal shrouds

Description	Pack qty.	Art No.
Terminal shrouds 3P LBS 125-200A	1	<b>HZC201</b>
Terminal shrouds 4P LBS 125-200A	1	<b>HZC202</b>
Terminal shrouds 3P LBS 200-400A	1	<b>HZC203</b>
Terminal shrouds 4P LBS 200-400A	1	<b>HZC204</b>
Terminal shrouds 3P LBS 400-630A	1	<b>HZC205</b>
Terminal shrouds 4P LBS 400-630A	1	<b>HZC206</b>



HZC201

## Single connection terminals

Description	Pack qty.	Art No.
Cage terminal for HA351,52,53M, 92,94	1	<b>HZ073</b>
Cage terminal for HA353,54,55M	1	<b>HZ074</b>
Cage terminal for HA357	1	<b>HZ075</b>
Cage terminal for HA358	1	<b>HZ076</b>



HZ073

## Double connection terminals

Description	Pack qty.	Art No.
Double Cage terminal for HA351,52,53M, 92	1	<b>HZ183</b>
Double Cage terminal for HA353,54,55M	1	<b>HZ184</b>
Double Cage terminal for HA357	1	<b>HZ185</b>
Double Cage terminal for HA358	1	<b>HZ186</b>



HZ183



HAE410

## Load break switches visual breaking

Description	Pack qty.	Art No.
Load break switch visible break. 4P 100A	1	<b>HAE410</b>
Load break switch visible break. 4P 125A	1	<b>HAE412</b>
Load break switch visible break. 4P 160A	1	<b>HAE416</b>
Load break switch visible break. 3P 100A	1	<b>HAE310</b>
Load break switch visible break. 3P 125A	1	<b>HAE312</b>
Load break switch visible break. 3P 160A	1	<b>HAE316</b>



HA406N

## Load break switches visual breaking

Description	Pack qty.	Art No.
Load break switch visib.breaking 4P 125A	1	<b>HA406N</b>
Load break switch visib.breaking 4P 160A	1	<b>HA407</b>
Load break switch visib.breaking 4P 200A	1	<b>HA408</b>
Load break switch visib.breaking 4P 250A	1	<b>HA964N</b>
Load break switch visib.breaking 4P 400A	1	<b>HA966N</b>
LOAD BREAK SWITCH 3P 160A	1	<b>HA307</b>



HZC014

## Detachable handle

Description	Pack qty.	Art No.
Grey handle LBS 100-160A	1	<b>HZC014</b>
BLACK HANDLE FCS - LBS 20-63A	1	<b>HZC001</b>
Black handle FCS- LBS 100-630A	1	<b>HZC002</b>



HZC115

## Shaft extensions

Description	Pack qty.	Art No.
Shaft extension N°6 200mm LBS 100-160A	1	<b>HZC115</b>
Shaft extension N°6 320mm LBS 100-160A	1	<b>HZC116</b>
Shaft extension 200 mm FCS-LBS 80-250A	1	<b>HZC103</b>
Shaft extension 320 mm FCS-LBS 80-250A	1	<b>HZC104</b>
Shaft extension 200 mm FCS-LBS 63-630A	1	<b>HZC101</b>
Shaft extension 320 mm FCS-LBS 63-630A	1	<b>HZC102</b>



HZC311

## Auxiliary contacts

Description	Pack qty.	Art No.
Auxiliary contact 1C+1O LBS 20-160A	1	<b>HZC311</b>
Auxiliary contact 1C+1O ha100/160	1	<b>HZ022</b>
Auxiliary contact 2C LBS 20-160A	1	<b>HZC312</b>

## Single phase voltage sensing tap

Description	Pack qty.	Art No.
Single phase voltage sensing tap	1	<b>HZI230</b>



HZI230

## Terminal shields

Description	Pack qty.	Art No.
Terminal shrouds 3P LBS 100-160A	1	<b>HZC217</b>
Terminal shrouds 4P LBS 100-160A	1	<b>HZC218</b>
Terminal covers ha407	1	<b>HZ062</b>
CAPOT CACHE BORNE POUR HA964N	1	<b>HZ094</b>
Terminal Shrouds for HA964N 3P	1	<b>HZ095</b>
Terminal Shrouds for HA966N 3P	1	<b>HZ096</b>



HZC217

## Terminal shrouds

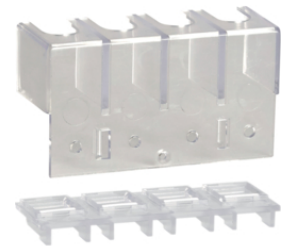
Description	Pack qty.	Art No.
Connection terminal ha406N / ha407	1	<b>HZ082</b>
Collar terminals for HA964N 3P	1	<b>HZ093</b>
Connection terminal ha307	1	<b>HZ072</b>



HZ082

## Terminal shield & shroud

Description	Pack qty.	Art No.
Terminal covers+connect.terminal ha407	1	<b>HZ092</b>



HZ092