

PVC, aluminium and steel trunking

	Page
tehalit.BRP PVC trunking	3
tehalit.BRAP aluminium trunking	4
tehalit.BRS steel trunking	5
tehalit.BRP/BRAP/BRS accessories for earthing	7
tehalit.BRP/BRAP/BRS 45mm frames	9
tehalit.BRP/BRAP/BRS 60mm frames	10



BRP6510019010

65 x 100, 1 partition

Description	Pack qty.	Art No.
Trunking base, 65100, pure white	8	BRP6510019010
BRP Cover 80, pure white	24	BRP08029010
partition LF H60	50	M2026
Internal corner, BRP/BRAP65100, pure white	1	BRP651004H9010
External corner, BRP/BRAP65100, pure white	1	BRP651003H9010
Flat corner, BRP/BRAP 65100, pure white	1	BRP651005H9010
End cap, BRP 65100, pure white	1	BRP6510069010
Coupling, BRP	1	BRP65XXX9



BRP6513019010

65 x 130, 1 partition

Description	Pack qty.	Art No.
Trunking base, 65130, pure white	8	BRP6513019010
BRP Cover 80, pure white	24	BRP08029010
partition LF H60	50	M2026
External corner, BRP/BRAP65130, pure white	1	BRP651303H9010
Flat corner, BRP/BRAP 65130, pure white	1	BRP651305H9010
End cap, BRP 65130, pure white	1	BRP6513069010
Coupling, BRP	1	BRP65XXX9



BRP6517019010

65 x 170, 1 partition

Description	Pack qty.	Art No.
Trunking base, PVC, 65170, pure white	8	BRP6517019010
BRP Cover 80, pure white	24	BRP08029010
partition LF H60	50	M2026
External corner, BRP/BRAP65170, pure white	1	BRP651703H9010
Internal corner, BRP/BRAP65170, pure white	1	BRP651704H9010
Flat corner, BRP/BRAP 65170, pure white	1	BRP651705H9010
End cap, BRP 65170, pure white	1	BRP6517069010
Coupling, BRP	1	BRP65XXX9



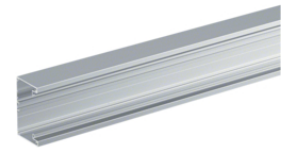
BRP65210D19010

65 x 210, 2 partitions

Description	Pack qty.	Art No.
Trunking base, PVC, 65210D, pure white	8	BRP65210D19010
BRP Cover 80, pure white	24	BRP08029010
partition LF H60	50	M2026
External corner, BRP/BRAP65210, pure white	1	BRP652103DH9010
Internal corner, BRP/BRAP65210, pure white	1	BRP652104DH9010
Flat corner, BRP/BRAP 65210D, pure white	1	BRP652105DH9010
End cap, BRP 65210D, pure white	1	BRP652106D9010
Coupling, BRP	1	BRP65XXX9

65 x 100, 1 partition

Description	Pack qty.	Art No.
Alu-trunking base 65x100, anodised	8	BRAP651001ELN
Alu-trunking lid 80, anodised	16	BRAP0802ELN
M 1043 Partition, BR, 1gang, black	40	M1043
Internal corner, BRP/BRAP65100, lac.nat.an	1	BRP651004HLAN
Outside corner, BRP / BRAP65100, hfr, va	1	BRP651003HLAN
Flat corner, BRP/BRAP 65100,, lac.nat.an	1	BRP651005HLAN
Endcap for BRAP 65100, anodised	1	L6532ELN
Coupling pins BRA/BRAN	100	L5412



BRAP651001ELN

65 x 130, 1 partition

Description	Pack qty.	Art No.
Alu-trunking base 65x130, anodised	8	BRAP651301ELN
Alu-trunking lid 80, anodised	16	BRAP0802ELN
M 1043 Partition, BR, 1gang, black	40	M1043
Internal corner, BRP/BRAP65130, lac.nat.an	1	BRP651304HLAN
External corner, BRP/BRAP65130,, lac.nat.a	1	BRP651303HLAN
Flat corner, BRP/BRAP 65130,, lac.nat.an	1	BRP651305HLAN
Endcap for BRAP 65130, anodised	1	L6533ELN
Coupling pins BRA/BRAN	100	L5412



BRAP651301ELN

65 x 170, 1 partition

Description	Pack qty.	Art No.
Alu-trunking base 65x170, anodised	8	BRAP651701ELN
Alu-trunking lid 80, anodised	16	BRAP0802ELN
M 1043 Partition, BR, 1gang, black	40	M1043
Internal corner, BRP/BRAP65170, lac.nat.an	1	BRP651704HLAN
External corner, BRP/BRAP65170,, lac.nat.a	1	BRP651703HLAN
Flat corner, BRP/BRAP 65170,, lac.nat.an	1	BRP651705HLAN
Endcap for BRAP 65170, anodised	1	L6534ELN
Coupling pins BRA/BRAN	100	L5412



BRAP651701ELN

80 x 200, 2 partitions

Description	Pack qty.	Art No.
Alu-trunk. base 80x200,2-comp, anodised	6	BRAP802001ELN
Alu-trunking lid 80, anodised	16	BRAP0802ELN
M 1043 Partition, BR, 1gang, black	40	M1043
Internal corner for BRAP80200, anodized	1	L8081ELN
External corner for BRAP80200, anodized	1	L8082ELN
Flatcorner for BRAP 80200, anodized	1	L8085ELN
Coupling pins BRA/BRAN	100	L5412



BRAP802001ELN



BRS6510019010

65 x 100, 1 partition

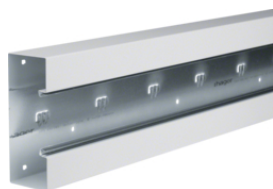
Description	Pack qty.	Art No.
Trunking base, steel	8	BRS6510019010
cover 80mm, steel	32	BRS08029010
Internal corner, steel	1	BRS6510049010
Angle interieur	1	BRS651004H9010
External corner, steel	1	BRS6510039010
External corner	1	BRS651003H9010
Endcap, steel	1	BRS6510069010
Flatcorner, steel	1	BRS6510059010
Flatcorner	1	BRS651005H9010
Flange, steel	1	BRS65100W9010
Cover joints, steel	1	BRS6510079010



BRS6513019010

65 x 130, 1 partition

Description	Pack qty.	Art No.
Trunking base, steel	8	BRS6513019010
cover 80mm, steel	32	BRS08029010
Internal corner, steel	1	BRS6513049010
Angle interieur	1	BRS651304H9010
External corner, steel	1	BRS6513039010
External corner	1	BRS651303H9010
Endcap, steel	1	BRS6513069010
Flatcorner, steel	1	BRS6513059010
Flatcorner	1	BRS651305H9010
Flange, steel	1	BRS65130W9010
Cover joints, steel	1	BRS6513079010



BRS6517019010

65 x 170, 1 partition

Description	Pack qty.	Art No.
Trunking base, steel	8	BRS6517019010
cover 80mm, steel	32	BRS08029010
Internal corner, steel	1	BRS6517049010
Angle interieur	1	BRS651704H9010
External corner, steel	1	BRS6517039010
External corner	1	BRS651703H9010
Endcap, steel	1	BRS6517069010
Flatcorner, steel	1	BRS6517059010
Flatcorner	1	BRS651705H9010
Flange, steel	1	BRS65170W9010
Cover joints, steel	1	BRS6517079010

66 x 210, 1 partition

Description	Pack qty.	Art No.
Trunking base, steel	4	BRS652101D901 0
cover 80mm, steel	32	BRS08029010
Internal corner, steel	1	BRS652104D901 0
Internal corner	1	BRS652104DH90 10
External corner, steel	1	BRS652103D901 0
External corner	1	BRS652103DH90 10
Endcap, steel	1	BRS652106D901 0
Flatcorner, steel	1	BRS652105D901 0
Flatcorner	1	BRS652105DH90 10
Flange, steel	1	BRS65210WD901 0
Cover joints, steel	1	BRS652107D901 0



BRS652101D9010

66 x 210, 2 partitions

Description	Pack qty.	Art No.
Trunking base, steel	4	BRS652101D901 0
cover 80mm, steel	32	BRS08029010
Internal corner, steel	1	BRS652104D901 0
Internal corner	1	BRS652104DH90 10
External corner, steel	1	BRS652103D901 0
External corner	1	BRS652103DH90 10
Endcap, steel	1	BRS652106D901 0
Flatcorner, steel	1	BRS652105D901 0
Flatcorner	1	BRS652105DH90 10
Flange, steel	1	BRS65210WD901 0
Cover joints, steel	1	BRS652107D901 0



BRS652101D9010



Earth straps

Description	Pack qty.	Art No.
L 4181 Earth Strap 150mm	100	L4181GNGE
L 4182 Earth Strap 300mm	100	L4182GNGE
L 4183 Earth Strap 600mm	25	L4183GNGE

L4181GNGE



Earthing strip

Description	Pack qty.	Art No.
Ground connection drag BRS Höhe 70mm	10	R6570VERZ

R6570VERZ



Cable retainers

Description	Pack qty.	Art No.
L 4253 Cable retainer	80	L4253BCHR
L 4254 Cable retainer	70	L4254BCHR
L 4255 Cable retainer	50	L4255BCHR

L4253BCHR



Earth terminal

Description	Pack qty.	Art No.
L 4187 Earth Terminal	10	L4187CHRO

L4187CHRO



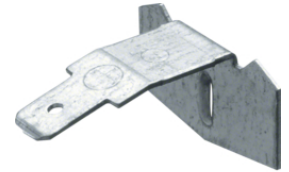
Earth kit

Description	Pack qty.	Art No.
L 5802 Earthing set BRAN 70110	1	L5802

L5802

Earth strap

Description	Pack qty.	Art No.
L 4180 Earth tag	50	L4180VERZ



L4180VERZ

Accessories

Description	Pack qty.	Art No.
Divider for steel trunking BRS/BRSN/FWKP	32	TWS70VERZ
Partiton, BRSN/LFS, 1gang, pvc	48	G1612
Externer corner lid	1	BRS0802A9010
Internal corner lid	1	BRS0802I9010
L 4253 Cable retainer	80	L4253BCHR
L 4187 Earth Terminal	10	L4187CHRO
Universal earth clip BRSN	10	G2401
L 4181 Earth Strap 150mm	100	L4181GNGE
L 4182 Earth Strap 300mm	100	L4182GNGE
L 4183 Earth Strap 600mm	25	L4183GNGE



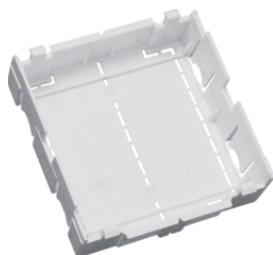
TWS70VERZ



GT4519010

45mm frames

Description	Pack qty.	Art No.
Outlet box 1 gang 45x45, pure white	1	GT4519010
Outlet box 1 pang 45x45x black	1	GT4519011
Outlet box 1 pang 45x45x alu	1	GT451ALU
Outlet box 2 pang 45x45x pure white	1	GT4529010
Outlet box 2 pang 45x45x black	1	GT4529011
Device bearer outlet 2-fold 45x45 alumin	1	GT452ALU
Outlet box 3 pang 45x45x black	1	GT4539011
Outlet box 3 pang 45x45x alu	1	GT453ALU
Outlet box 3 pang 45x45x pure white	1	GT4539010



LFF79H

Insulation box

Description	Pack qty.	Art No.
1 gang insulation box for LFF71H/N/S	10	LFF79H

Mounting boxes high voltage

Description	Pack qty.	Art No.
Outlet box 1-g. Energy f-mount domestic	1	G2850
Outlet box 2-g. Energy f-mount domestic	1	G2860



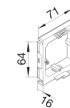
G2850

Mounting boxes low voltage

Description	Pack qty.	Art No.
Outlet box 1-g. Data f-mount domestic	1	G2870

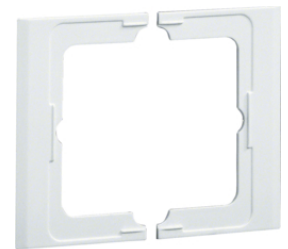


G2870



Finishing frame

Description	Pack qty.	Art No.
Frame for devices >80, halogen-free,	1	G35609010
Frame for devices >80, halogen-free,	1	G3560LAN



G35609010

CEE outlet box

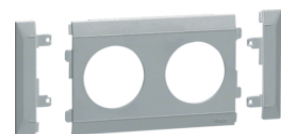
Description	Pack qty.	Art No.
Outlet box CEE 32A front-mounted	1	G2745
frontplate kit outlet box CEE, pw	1	G33749010



G2745

ecoline

Description	Pack qty.	Art No.
2-gang socket outlet box, BRSN, version F	10	G39999010
2-gang socket outlet box, BRSN, version F	10	G3999ROT
Frontplate, halogen-free, nat.anod.	1	G3501LAN
Frontplate modular halogen-free,	10	G3561LAN
Input connector, 3 poles	25	G4703
Output connector, 3 poles	25	G4713
Outlet box 1-g. Data f-mount domestic	1	G2870
Data socket 2g, cat6 UTP, 8/8 pin	1	G3155
Frontplate 2 x RJ45, 80mm, hfr, paint. alu	1	G3234LAN
Frontplate modular socket outlet 2gang	1	G35007035
Frontplate modular intermediate	10	G35517035



G3501LAN