

**Crossbar for QuickConnect terminal**

Description	Pack qty.	Art No.
Terminal base, volta, QC terminal	1	<b>VZ711</b>

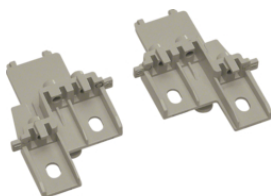
VZ711



**Connection assembly**

Description	Pack qty.	Art No.
Terminal, Volta, add.terminal, 1Ph+N	1	<b>VZ403</b>
Terminal, Volta, add.terminal, 3Ph+N, 63A	1	<b>VZ428</b>

VZ403



**Crossbar support**

Description	Pack qty.	Art No.
Adapter, vector, f. control terminal	1	<b>VZ744</b>

VZ744



**Keylock**

Description	Pack qty.	Art No.
Key lock, vector, 2 keys	1	<b>VZ311</b>

VZ311



**Coupling sleeve**

Description	Pack qty.	Art No.
Coupling bushing, vector, PG21, Set: 10 pcs	1	<b>VZ754</b>

VZ754

**Cable entry**

Description	Pack qty.	Art No.
Bushing line, vector, IP54, metric	1	<b>VZ758</b>



VZ758

**Finishing accessories**

Description	Pack qty.	Art No.
Insert shutter, vector, for 12M	1	<b>VZ747</b>
Insert shutter, vector, for 18M	1	<b>VZ748</b>



VZ747

**Blanking strips**

Description	Pack qty.	Art No.
Blanking strip, universal, 6M, RAL 7035	10	<b>VZ413</b>
Blanking strip, universal, 12M, RAL 7035	10	<b>VZ415</b>
Blanking strip, universal, 18M, RAL 7035	10	<b>VZ416</b>



VZ413