



S131-22F

**Mouvement detector LS wired, 90°**

Description	Pack qty.	Art No.
Hardwired motion detector / White	1	<b>S131-22F</b>



S132-22X

**Mouvement detector LS wired, corridor 22 m**

Description	Pack qty.	Art No.
Hardwired long range motion detector Whi	1	<b>S132-22X</b>



S133-22X

**Hardwired curtain motion detector**

Description	Pack qty.	Art No.
Hardwired curtain motion detector White	1	<b>S133-22X</b>



S135-22X

**Hardwired pet-tolerant motion detector**

Description	Pack qty.	Art No.
Hardwired pet-tolerant motion detector	1	<b>S135-22X</b>



S136-22F

**Hardwired 360° ceil. movement detector**

Description	Pack qty.	Art No.
Hardwired 360° ceil. movement detector	1	<b>S136-22F</b>

**Hardwired dual tech movement detector**

Description	Pack qty.	Art No.
Hardwired dual tech movement detector	1	<b>S139-22F</b>



S139-22F

**Pet-tolerant hardwired motion detector IP54**

Description	Pack qty.	Art No.
External pet-tolerant motion detector	1	<b>S138-22F</b>



S138-22F

**Glassbreak detector**

Description	Pack qty.	Art No.
PIEZO ELECTRIC GLASS BREAK	1	<b>D8919</b>
PIEZO ELECTRIC DETECTOR, WHITE	1	<b>D8920</b>



D8919

**Espace wide gap NC contacts**

Description	Pack qty.	Art No.
MAGNETIC CONTACT, WIDE GAP	1	<b>D8921</b>



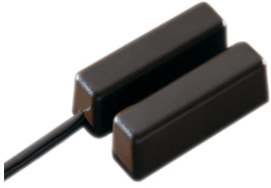
D8921

**Ground-mounted NC contacts**

Description	Pack qty.	Art No.
MAGNETIC CONTACT, HEAVY DUTY,	1	<b>D8922</b>



D8922

**White surface anti-tamper NC contact**

Description	Pack qty.	Art No.
Brown surface anti-tamper NC contact	1	<b>D8932</b>

D8932

**Tampered junction box**

Description	Pack qty.	Art No.
Tampered junction box	1	<b>BRA01</b>

BRA01